

Securing Ecosystem by RFCX Cloud API

R. Sathya Sri
Dept of CSE,
PITS.

G. Vithya
Assistant Professor,
Dept of CSE,
PITS.

Abstract:- By the utilization of recent good phones that is even if not operating, solar array accustomed charge the phone and RFCx will cut back the deforestation by characteristic felonious work activities through a RFCx put in mobile device, the remote user of this will simply alter immediate intervention to avoid this activity.

1. INTRODUCTION:

As a Engineer we are all having undertaking to reduce the deforestation and international warming. By using this Rainforest connection application we can right now intervention to any illegal things to do through this we can limit the deforestation. The rainforest safety is completed with the aid of the use of a recycled clever telephone which is used to become aware of the unlawful logging activities. This mission is applied in many woodland and it is effectively apprehend the illegal activities.

It was added through Topper White, one that day he used to be in Indonesia. While crossing the rainforest in Indonesia he, hear the chainsaw which is comes the forest and when he reached the race station he didn't hear the sound that time he thinking to implement his thinking to over this problem. The historic clever telephone is recycled for reuse and it was charged through using solar cells and one Micro phones is also used. This Smart phone is used as a sensor here, this package will be fixed in the middle of the tree and rainforest connection software is set up to the far flung user with their clever phone. If any unlawful logging activity had been show up then the smart telephone which is fixed in the tree feel the alert to the specific faraway user.

2. PREVENTING OF ILLEGAL ACTIONS:

There are three type of preventinf illegal actions through RCFx monitoring system:

2.1. DETECTING ILLEGAL DEFORESTATION:

Illegal deforestation is a gateway recreation to clearing rainforest, one of the fundamental causes of climate change. According to the UN up to 90% of logging in tropical rainforests is illegal. The motive we begin with a focal point on stopping unlawful logging is because, in case after case, we have considered first hand that if you can guard the trees, you give up up defending the whole lot else.

The RFCx monitoring machine offers our partners the probability to guard key rainforest areas and respond to real-time alerts, while sharing massive amounts of ecosystem records that assist negotiate accelerated protections in these areas. In some cases, protecting the

perimeter of a rainforest can absolutely imply defending the entirety at the back of it.

2.2. STOP ANIMAL POACHING:

Our purpose at Rainforest Connection is to make positive poachers no longer have free reign over the world's rainforests. To that end, we use the RFCx gadget to assist our companions recognize patterns of recreation associated to poaching, which includes indicators for trucks, automobiles and motorcycles being used by using poachers in key covered areas. The RFCx gadget helped our partners allocate confined manpower to two target key instances and days each month where poaching activities were statistically very high.

2.3. BIO-ACOUSTIC MONITORING:

Every birdcall, insect chirrup, rustle in the leaves, and drop of rain: We're growing a digital library that can supply scientists instantaneous get admission to to big troves of raw, acoustic statistics gathered from rainforests worldwide. Why gathering real-time records on rainforests is basically important? For the first time in history we're within a stone's throw of developing the world's most exceptional records set: A trove of life science and eco-data on a platform that lets scientists examine month over month, year over year adjustments to our planet's most endangered ecosystems in order to defend their health. The facts can be used for land management, coverage modifications and allocation of constrained resources for higher impact.

3. PROCESS OF RFCX MONITORING SYSTEM:

The RFCx is mostly used to reduce the deforestation and it retailer the ecosystem via listening continuous chainsaw. It is installed in the clever phone of far flung consumer and microphones that will keep on pay attention the forest. Each device will be work or cowl 2 to 3kilometers which constant in the tree and it continually analyze the wooded area, each and every second will be analyzed thru this device. The unlawful logging recreation is without difficulty recognized and the motion can be taken immediately. One machine can almost shield the 300 hectares of endangered. It is first implemented at Indonesia then consecutively carried out in Cameroon, Ecuador, Peru, Brazil and soon in Bolivia. The RFCx monitoring gadget gives our companions the probability to protect key rainforest areas and reply to real-time alerts, whilst sharing large quantities of ecosystem facts that help negotiate accelerated protections in these areas. In some cases,

defending the perimeter of a rainforest can clearly imply defending everything at the back of it.



4. COMPONENTS USED:

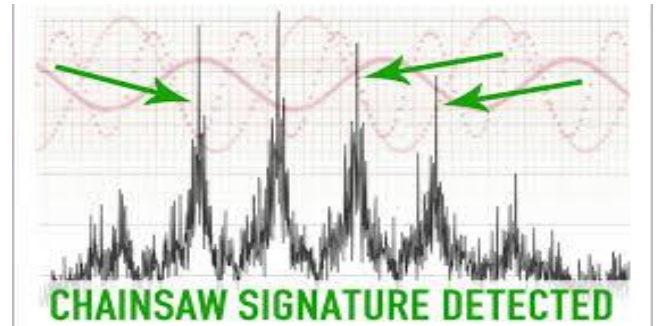
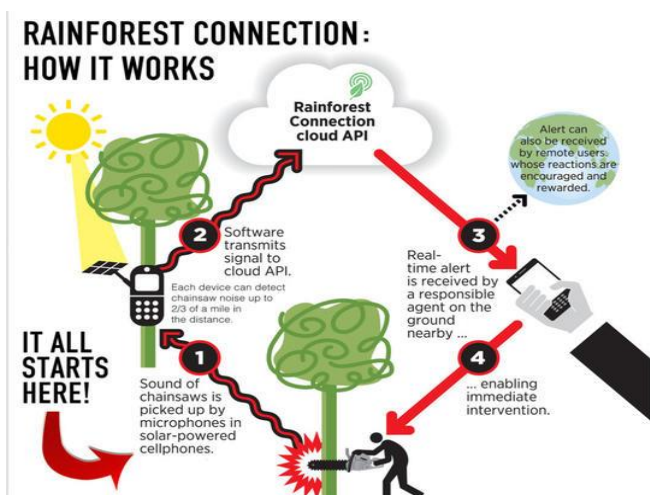
- Recycled old smart phones
- Solar Panel
- Rainforest connection API
- Remote user device

5. WORKING PRINCIPLE:

The unlawful pastime which produce some sounds are pick up by way of the microphones in solar powered clever telephones and the software which is already set up will transmit the sign to the rainforest connection cloud API that will produce the real time alert to the far off person device. The far off person will allow the instantaneous intervention. The chainsaw noise attain to the device and this signal is only transmitted to cloud API.

5.1. RFCX INSTALLED SMART PHONE:

The old clever telephone is used with RFCX software and micro phone is used to listen the woodland any unlawful action is taken in the forest. Our system will send real –time alert for Chainsaw , trucks,cars



5.1. RFCX INSTALLED SMART PHONE:

The old clever telephone is used with RFCx software and micro phone is used to listen the woodland any unlawful action is taken in the forest. One system will almost 2 to 3 kilo meters work. How can the old smart cellphone work? By accumulating the historic unused smart phone, they are recycled for reuse for this challenge is will minimize the cost. It is installed with Rainforest connection API. It is region in the middle of the tree with solar panel.

5.2. SOLAR PANEL:

Solar cells are used to charge the above gadgets , each gadget will have separate solar panels. This Solar Panels are charged through solar light in day time and it grant the strength to the clever phones to work 24 hours. It is without difficulty charge the machine there is no want of electrical energy for this device.

5.3. RAINFOREST CONNECTION API:

The rainforest connection software program is used to listen the woodland place sounds if any illegal exercise is occur on the wooded area it will understand it . It is hooked up on the clever telephone which is on the tree. It will analyse forest 24 hours and each 2 to 3 kilo meter one gadget will be placed on the forest . By using this application only can without difficulty located that illegal things to do thru sending alert to the faraway user. This is the import one for this project.

5.4. REMOTE USER DEVICE:

They are the one who will receive the alert message from these RFCx device. The remote user will take action for that on the unlawful motion did person. Because of this devices the remote consumer can without difficulty get hold of the alert message and take instantaneous action. The faraway user is nothing however who will have the connection to those device. Overall deforestation and world warming is reduced.

6. CO2 CYCLE:

We all recognize that the carbon emissions at once have an effect on local weather change. According to the Intergovernmental Panel on Climate Change(IPCC), as lots as 17% of carbon emissions are brought about by means of deforestation. The transportation will contributes on climate change is 13% of emissions. So we have store the rainforest by way of using one device, that will shield 300 hectares of endangered wooded area to stopping logging that would launch 15000 tones of CO2 into the atmosphere

(50 CO₂ / hectares).That is equivalent to taking more than 3000 motors off the avenue (5 CO₂/hectares).



9.CONCLUSION:

Finally with the aid of the use of the RFCx machine we can discover the unlawful logging things to do due to the fact of this the deforestation and global warming is reduced. Through this can in a position to reuse the now not worked cell telephones by way of recycle it.

10.REFERENCE:

- [1] F. Achard *et al.*, “Determination of deforestation rates of the world’s humid tropical forests,” *Science*, vol. 297, pp. 999–1002, Aug. 9, 2002.
- [2] M. C. Hansen *et al.*, “High-resolution global maps of 21st-century forest cover change,” *Science*, vol. 342, pp. 850–853, Nov. 15, 2013.
- [3] P. M. Fearnside, “The roles and movements of actors in the deforestation of Brazilian amazonia,” *Ecol. Soc.*, vol. 13, no. 1, p. 23, 2008 [Online].
- [4] S. A. Spera *et al.*, “Recent cropping frequency, expansion, and abandonment in Mato Grosso, Brazil had selective land characteristics,” *Environ. Res. Lett.*, vol. 9, p. 064010, 2014.
- [5] J. Sun, Z. Huang, Q. Zhen, J. Southworth, and S. Perz, “Fractally deforested landscape: Pattern and process in a tri-national Amazon frontier,” *Appl. Geogr.*, vol. 52, pp. 204–211, Aug. 2014.
- [6] R. Verburg, S. R. Filho, D. Lindoso, N. Debortoli, G. Litre, and M. Bursztyn, “The impact of commodity price and conservation policy scenarios on deforestation and agricultural land use in a frontier area within the Amazon,” *Land Use Policy*, vol. 37, pp. 14–26, Mar. 2014.
- [7] M. A. Cochrane *et al.*, “Positive feedbacks in the fire dynamic of closed canopy tropical forests,” *Science*, vol. 284, pp. 1832–1835, Jun. 11, 1999.
- [8] D. C. Morton, Y. Le Page, R. DeFries, G. J. Collatz, and G. C. Hurtt, “Understorey fire frequency and the fate of burned forests in southern Amazonia,” *Philos. Trans. Roy. Soc. B Biol. Sci.*, vol. 368, Jun. 5, 2013, doi: 10.1098/rstb.2012.0163.

- [9] J. K. Balch, T. J. Massad, P. M. Brando, D. C. Nepstad, and L. M. Curran, “Effects of high-frequency understorey fires on woody plant regeneration in southeastern Amazonian forests,” *Philos. Trans. Roy. Soc. B Biol. Sci.*, vol. 368, Jun. 5, 2013, doi: 10.1098/rstb.2012.0157.
- [10] A. L. Silva Monteiro, P. G. Barreto, F. L. D. S. Pantoja, and J. J. Gerwing, “Impactos da exploração madeireira e do fogo em florestas de transição da Amazônia Legal,” *Scientia Forestalis*, vol. 65, pp. 11–21, 2004.
- [11] E. A. T. Matricardi, D. L. Skole, M. A. Pedlowski, and W. Chomentowski, “Assessment of forest disturbances by selective logging and forest fires in the Brazilian Amazon using Landsat data,” *Int. J. Remote Sens.*, vol. 34, pp. 1057–1086, Feb. 20, 2013.