

Let Hands Speak: Recognition of Sign Language

¹Ramesh M. Badiger,
Assistant Professor
Department of CSE
TCE, Gadag, Karnataka

²Dr. Dharmanna L
Associate Professor
HOD, Dept of ISE
SDMIT, UJIRE, Karnataka

Abstract - The Deaf are sheared of their image name language for over 100 years, with tense sentence for his or her flourishing, residency and culture. Signal primarily based correspondence is that the typical language of the Deaf, used for erudite new flip of events and different human properties that square measure language connected. Persistent Systems (improvement of characters to deal with a language) store and acquire back information for molding, science, data creation, information spreading, correspondence once some closeness, so forth. SignWriting could be a creating structure thought of capable the spatial-visual nature of Sign Languages. not considering, current process enhancements dismissal to present the Deaf persuading contraptions for his or her institution wants (they want accommodation, correspondingly as square measure adjusted understanding from the oral language, etc.). Another, unendingly brand technique of exploitation screen and pointer for on-line extremely created confirmation out of Sign Writing. This leads to handiness of a info, to be employed by computer vision/character affirmation to manage course of action regarding Sign writing editors.

Keywords - SignWriting, Deaf Culture, Gesture, visual-Spatial, phonetic

I. INTRODUCTION

Needing an amplifier society is the course of action of social emotions, practices, craftsmanship, reasonable shows, history, values, and shared establishments of frameworks that are impacted by deafness and which use movement based exchanges as the standard strategies for correspondence. Hard of hearing individuals were once considered clinically insufficient, and were exposed to methodology to "evacuate" deafness so as to become "ordinary". In any case, the Deaf spare the option in contrast to a character, language and culture.

They spare the advantage to induce to the accessible human prospects, as an example, delegate correspondence, social expedited effort, learning, then forth. affiliation by methods for signals, of visual-spatial method, is that the brand language of the Deaf, appropriate giving complicated linguistics functionalities. Requiring a versatile attention society is that the term applied to the social improvement that believes hearing impairment to be ability in human familiarity –instead of a deficit. Lamentably, Deaf children UN agency ar unremarkably at home with non-Deaf families (90% of the cases) cannot guarantee regarding the oral language, and that they have for all intents and functions no preface to linguistic

communication. This nonappearance of early language acquisition of a first language makes authentic results the Deaf quick new turn of events, citizenship and culture. The Deaf don't make sure about basic thoughts of consistently life, and, along these lines, don't develop the unparalleled mental assets, a method that is interceded by language. The hearing-impaired feel issues to guarantee about a foundation skeleton, be it of the oral language, the unable to hear experience issues to ensure about a creation structure, be it of the oral language, or of the Sign Language. Assembly structures fill in as help for the front line, in general society [1].

Gesture based communication is a type of manual correspondence which is utilized in each network of hard of hearing people and is by all accounts created again by them at whatever point such a structure has not been recently settled. It comprises to a great extent of steady, regular hand developments and stances every one of which passes on ideas. Dissimilar to finger spelling, where distinctive hand shapes speak to letters of the letters in order, and which is in this manner a letter-by-letter interpretation of communicated in language, gesture based communication is in general free of communicated in language.

One of the quality of gesture based communication is that a significant number of the signs are famous (i.e., their structures look like here and there what they signify). Further, gesture based communication has regularly been exposed to ponder endeavors at intercession with respect to the hard of hearing [2]. Correspondences by techniques for signals contribute to offered brand name to other oral tongues from marginal and indigenous gatherings that have their own social and standard strategies for keeping up individual's idiom show-stoppers. SignWriting, made by Sutton is the most used making structure for Sign Language.

PC image may be a field that has endeavored to form affiliations dependent on Sign Languages, however for the foremost fractions they base on video work. The quality target of this is often of victimization genuinely created character request out of SignWriting, with Associate in Nursing inflexibly wide, Human-Computer Interaction perspective of the Deaf desires, during a brand, powerfully direct creation means, utilizing a pill screen and pointer. From Associate in Nursing overall perspective, the client would "draw" neighborhood people of SignWriting into the pill victimization the pen [3]. Likewise, computer vision hand creating statement would then create the affordable sign from the extremely framed information.

so as to realize the target, laptop Vision needs a information with that to figure. the angle presents a web information of decoded SignWriting obtainable individuals assembled utilizing tablets and pen gadgets. Such information is to be utilized by the computer vision framework to indicate game-plan with relation to SignWriting structures. The methodology introduced reworks PC vision into the job of leaders in the respectable errand of creating PC administrations no doubt and powerful devices for the composing needs of the Deaf, benefits that ought to be utilized to educate configuration regarding curios for social consideration and social conservation.

II. LITERATURE SURVEY

A. Cayley, jfguardezi, lesoliveria, suelif states that SignWriting is that the best and used making system for linguistic communication. In any case, there's a nonattendance of methodologies and procedure instruments for telling the Deaf the most effective thanks to write in their own language. the problem of consecutive request is up 'til currently open for linguistic communication capability. These results a academic methodology dependent on the social hugeness of coaching. Likewise, it presents another usage of existing procedure instruments: that of a pill, with contact screen and pointer, that the client will produce extremely on the screen – as opposition the cumbersome existing word processors.

B. homas. Hanke states that the city Notation System for Sign Languages (HamNoSys) is Associate in Nursing alphabetic structure delineating signs on a by and enormous phonetic level. A comparable variety of sign documentation frameworks remodeled the foremost recent thirty years, it's its basic foundations within the Stokoe documentation structure that recognizable Associate in Nursing alphabetic structure with depict the sublexical limits zone, hand arrange (a nice a part of the time, the hand form just) and advancement to supply aphonological portrayal of yank Hint Language signs.

C. A HamNoSys documentation for a solitary sign contains of an outline of the underlying stance (portraying nonmanual highlights, hand shape, hand direction and area) additionally to the activities dynamic this stance in succession or in equal. The HamNoSys photos ar open as a Unicode text vogue, with the characters organized into the personal Use zone of Unicode.

D. Cayley Guimaraes et al manufacturers says that Brazilian linguistic communication (Libras) is that the language employed by the individuals from the nearly deaf system, the tutorial network and connected systems for access to data, citizenship, capability, among others. The group action of agreeable mechanical assemblies in Libras accepts an enormous activity in social dodging and group action of residency of the virtually deaf. hearing disorder is quite a "loss of post, a model of self dodging, of release, of quietness, indefinite quality and confinement". Santos conclaims science to portray the planet, but to under-stand it in person and to

uncover the human prospects, remodeling the data into affordable, after prompting incorporation. during this sense, the laborious of hearing network should be regarded in its approach of life, its temperament, and its own language. Stokoe noticed that signs, similar to words, do have an interior structure by exhibiting that signs must be depicted as far as three boundaries: dez(hand design), tab (area), and sig (development). Feed initially instituted the term chereche for these sub lexical units, yet later analysts brought up that what was being depicted was the phonological structure of ASL and wanted to call them phonemes.

E. Working inside Stokoe's structure, scientists started decisively to contemplate the phonology of marked dialects. Creator likewise expressed that Sign language is a type of manual correspondence which is utilized in each network of hard of hearing people and is by all accounts contributed over again by them at whatever point such a structure has not been recently settled. It comprises to a great extent of steady, traditional hand developments and stances every one of which passes on ideas.

F.T.S. Huang, Y. Wu, creator says that, in the present digitized world, dealing with charge have broaden through and through, with PCs being progressed to the levels where they can help people in complex deeds. Regardless, input activities appear to cause a vital bottleneck in playing out a touch of the errands, under-using the open assets and confining the expressiveness of utilization. Hand Gesture certification acts the holy person here. PC Vision techniques for hand development interfaces must beat current execution to the degree power and speed to accomplish understanding and comfort. A survey of vision-based hand development attestation techniques has been introduced.

III. METHODOLOGY

System talks about the hard of hearing issues, communication through signing. And furthermore clarifies the significance of a composing framework for Sign Languages, SignWriting, Automatic Sign Language acknowledgment and SignWriting hand acknowledgment.

A. Deaf Issues, Sign Language

The absence of untimely Sign Language ensuring about (the essential language of the Deaf) makes it hard for Deaf youths to learn focal musings of ordinary bit by bit imminence. This nonattendance of first language getting is antagonistic to the astute headway of Deaf youngsters, and sees excellent results, for example, the inadequacy to play out a smidgen at a time assignments for the improvement of shrewd new development; the frailty to learn and structure; the delicacy to beat rash direct; the dependence on concrete, visual conditions; difficulties to control herself and to relate, among others.

Making frameworks square measure associate come back procurable of of images that address a language. They serve completely different cutoff points: they duplicate speak, concerns, and distinctive musings among different language connected occasions. The usage of a

worthy creation system for signing makes the Deaf develop associate inward structure stand out from her typical language, in an exceedingly manner of thinking that widens the phonetic and intellectual aptitudes; such use invigorates character and Deaf culture [4]. There square measure existing along projected creating structures for signing, of that bobbing up next square measure one or two of models: Mimographie documentation by Bebian, Stokoe documentation, urban center Notation System – HamNoSys by Hanke, D'Sign structure by Jouison, François Neve documentation, and SignWriting.

B. Importance of a composing framework for Sign Language

Language is more than a method for correspondence. Stoke, Francois Neve, HamNoSys and SignWriting these documentations are surrounding systems for signs, made to support the narrative and mobilization of signs through graphical pictures. SignWriting is the most used making structure for Sign Language. SignWriting relies on a pictorial/ideographic depiction structure, whose separating through standard follows visual-spatial basic pieces. It is a structure seen as used by Deaf people in their dependably endeavors. It fills unclear chunk from other surrounding structures from oral vernaculars: take notes, explore and make books and paper, learning at school, influence contracts, to do see, make making, etc.), thusly making it obligatory in true compliant use.

	Sign Writing	Stokoe	HamNoSys
what?		B _a B _a z~	~ ㄣ ㄣ ㄣ ㄣ ㄣ ㄣ
quote		ㄨ ㄨ ㄨ ㄨ ㄨ ㄨ	~ ㄣ ㄣ ㄣ ㄣ ㄣ ㄣ
three		3 ⁺	ㄣ ㄣ ㄣ ㄣ ㄣ ㄣ
bears		ㄣ ㄣ ㄣ ㄣ ㄣ ㄣ	~ ㄣ ㄣ ㄣ ㄣ ㄣ ㄣ
Goldilocks		ㄣ ㄣ ㄣ	ㄣ ㄣ ㄣ ㄣ ㄣ ㄣ

Fig. 1. example of diverse writing system for Indian Sign Language.

Figure 1 presents a couple of Signs in Indian Sign Language (ISL), and its fashioned configuration in SignWriting. The Signs are for the English words "What", "Explanation", "Three", "Bears" and "Goldilocks".

C. SignWriting : composing framework for Sign Language

Trades through stamping ar contained 2 or 3 cutoff points, as an example, Hand configuration, Contact (Location) , Palm of Hand Orientation, world and native Movement and Non-Manual Expressions. Etymologists utilize such synchronic

linguistics cutoff points to portray a symptom in linguistic communication. As showed by International SignWriting Alphabet (ISWA) [5], there ar thirty pictorial image get-togethers. each get-together contains 639 major pictorial footage. it's purposeful for every essential image to possess ninety six varieties (up to six obvious fills and sixteen turns). Such blends yield a add of thirty five,023 in depth footage. SignWriting jam the tridimensional characteristics of the linguistic communication because it cares many delineations for as so much as doable, as an example, Hand spot and bearing; sorts of Contacts; Hand Configuration; Finger Movements; Arm.

Enhancements and Pointing; Non-Manual Expression; Facial Expressions; Location of Symbols in the Head; Head Movement; Gaze course; Body Movement; Movement Dynamics, among others.

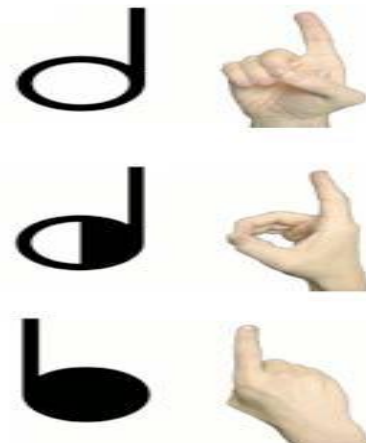


Fig. 2. : Hand Configuration and the corresponding SignWriting.

Figure 2 shows Hand arrangement and the divergent SignWriting, Hand relationship is one of the major SignWriting locals for a hand plan in three one of a sort headings.

D. Automatic Sign Language affirmation

Signs are widespread techniques for association among people. Hand present is a static hand present without fuse of upgrades. For instance, making a grip hand and holding it in a unambiguous position is a hand show. While, a hand enlargement is depicted as a staggering progress intimating a tactic of hand positions related by consistent advancements over a brief timeframe widen, for example, waving departure. With these composite chattels of hand developments, the subject of sign assertion can be decoupled into two levels-the low level hand act divulgence and the lifted level hand development pronouncement.

In vision based hand improvement attestation structure, the improvement of the hand is recorded by video camera(s). This information video is broken down into a lot of highlights taking into account singular edges. A sifting may in like way be performed on the edges to clear the senseless in sequence, and feature vital parts. For instance, the hands are pulled back from other deceased parts comparably as other foundation objects. The secluded hands are seen for various positions. Since, signals are only a social occasion of hand positions related by dependable turns of events, a recognizer can be set facing a would-be go together [5,6].

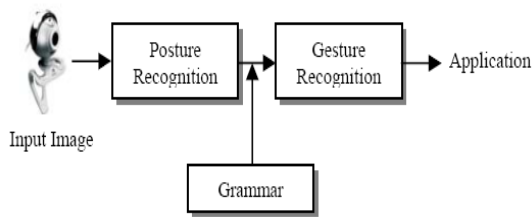


Fig. 3. Hand motion Recognition Process

With this, hand signs can be verified as working up out of a social event of hand positions in various techniques for creation, also as articulations are create by words. The perceptible signs can be used to drive an array of employments (Figure 3)

E. SignWriting hand affirmation

Compelling SignWriting truly created character assertion is a baffled system built-in several phases that are associated.

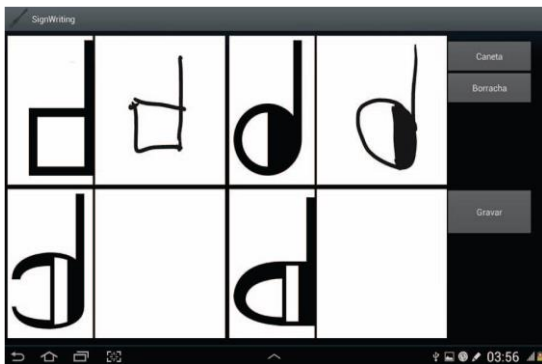


Fig. 4. : Data collecting system.

There is an essential for a customary database of pictures to shed light on research in genuinely created SignWriting text certification. Such database ought to be utilized in the astonishing turn of events, assessment. Figure 3.4 presents a print screen of the data gathering formation. As can be seen, the structure presents the picture, and gives a free borough to the customer to imitate such picture.

The natural action of the institution course of action out of the signing (for instance SignWriting) into the political education encounters created in an exceedingly bilingual locus for the Deaf space an enormous assurance to the unfold of the Libras and of the Deaf culture. Such change of integrity builds up AN interceding appliance for Bilingual acquirement of the Deaf. Bilingual limit, the adequate selection for Deaf heading, is that the ensuant course of action of social shows of the usage of the formed structure as an enormous system. enlargement based mostly correspondence is to be gotten by the Deaf through an enormous use of the language, wherever language expect a personality of valid suggesting: "in this conduct, acquirement as profitable arrangement is enjoyable, is reposeful up, is access to in sequence, is post, could be a thanks

to influence superintend preparing citizenship in several social practices"

From the stance of the phonetic political building, the utilization of the semiotic creation structure legitimates the define of the Deaf culture, in like manner because the character ties, given the huge activity that the spreading of a creation system takes on the standardization, lexical improvement and for the foremost half theoretical and creative swing away [1].

In such political and social circumstance, AN clearly name use and dissipating of SignWriting makes the open exterior door for a pellucidly basic leveling in power kindred amid the signing and also the oral language (Portuguese, for our condition). Enlargement based mostly trades amplify in criticality creating AN allowance for the chronicled activity of constructing structures keep up alive the memory of the language. This memory is bored by the affiliation and recording of the road of attack of human information. the data culture spins round the improvement of a all out obtaining, which, among varied systems, is made through language. The goal is to induce prepared occupants within the limit, recovering, appraisal and impressive usage of in an exceedingly row to manage problems and decide choices. The evading of the Deaf remembers for his or her non-enthusiasm for this headway of comprehension. From the educational perspective, this spoken language is known with the specificities of the rear to back solicitation of the Deaf, and the way the SignWriting have to be compelled to contain a mediating portion within the assignment of the alphabetic creation course of action out of the oral language [4]. the educational of the oral language by the Deaf works with the clarification that essentiality attribution recorded as a written duplicate follows from visual and specialist ways, during which the use of announcement through language takes on a basic business. The created planned out of the following language will be accomplish considering the method that the development of constructing is liberated from the oral language, on condition that it's a substitute system, each in structure and lead [3]. Regardless, to ascertain such clarification, there's a demand for instructive methodologies that disagree from those utilized in indicative of the oral language because the fond language (for non-Deaf children). this ways that of thinking do not organize the educational by the Deaf, and it takes around 9 (9) years to create a Deaf youth. Progressive requesting depends on the relations among phone and graphemes created by the near speakers, that cannot be penetrated by the Deaf. some appraisals concerning the specificities of the capability strategy of the Deaf [1] address such issue by proposing to manage while not the area of the relations letter-sound as motivation to induce to the encompassing structure. [1] et al propose the utilization of signing as AN interceding mental imagery within the learning of the created substance, and also the use of procedural systems from the inclination of a second language to outcasts to draw in the growth of the Deaf in direction practices.

To take a gander at without being "sifted through" identifies with truth of subjects that have a non-alphabetic

language as the fundamental language, and said subjects ace the creation structures out of a second alphabetic language, whether or not they don't go on orally through it [1]. In this sense, the direct visual piece of SignWriting addresses a go among part that adds to the advancement of the impossible to miss ordinary diligent capacities (with regards to model memory, indication, premise, meta-language, etc [3]) of the conference impeded young people, with the end focus on that creates planning

IV. APPLICATIONS

Composing framework for gesture based communications adds to by and large memory, writing, logical information creation, note taking, and correspondence among others. It will help for a Deaf people not to be reliant on others. HamNoSys is utilized to depict the type of the motions notwithstanding photographs and verbal portrayals.

V. ADVANTAGES AND DIS ADVANTAGES

The framework utilizes video and glove, and furthermore uses emulating the composition "noticeable all around" to be caught by cameras. Utilizations screen and pointer for online transcribed acknowledgment of sign composition. The Deaf experience issues to get composing framework be it of the oral language or of the gesture based communication. Composing frameworks fill in as help for the advanced, worldwide society. Indian Sign Language (ISL) licenses and understanding into the Deaf culture and gives more chances to speak with the individuals who are Deaf or in need of a hearing aide. ISL is likewise an extension between dialects where two individuals that communicate in various dialects can without much of a stretch impart.

DISADVANTAGES

You have to be within line of sight in order to communicate in sign language.

VI. CONCLUSION

A composing framework for Sign Languages contributes for the Deaf people group by and large memory, writing, logical information creation, note taking, and correspondence among others. This outcome a progressively normal approach to utilize one of the Sign Language composing frameworks: that of composing straightforwardly on a gadget. The handling of the system perception connects with natives from the hearing-impaired society with contraptions to long-suffering their made organization: to ensure their lifestyle, language, times gone by, data creation, and composing, among others. The database will be a useful mechanical congregation in their work on SignWriting declaration.

REFERENCES

- [1] Delegs-Editor, available at <http://www.delegs.com> accessed in 02/19/2013.
- [2] Hanke, T., HamNoSys: representing sign language data in language resources and language processing contexts. In: O. Streiter, C. Vettori (Eds.), LREC'04: Representation and processing of sign languages, ELRA, Paris, 2004.
- [4] Guimaraes et al., "Structure of the Brazilian Sign Language (Libras) for computational tools: citizenship and social inclusion. In: M.D. Lytras et al. (Eds.), WSKS, Corfu, Greece, CCIS.XXVII, p.110-120. ISBN 978-3-642-16323-4.
- [5] Stokoe, W.C., Sign Language structure, Linstok Press, Silver Spring, 1960.
- [6] T.S. Huang, Y. Wu, "Vision-based gesture recognition: a review", Gesture Workshop, France, v.1739 of LNCSS, p.103-115, 1999.
- [7] Fernandes, S., Educacao dos Surdos, IBPEX, Curitiba, 2012.