

Design and Development of Alumni Connect Forum: A Secure Web and Mobile Platform for Institutional Networking

Mr. Mrunal Awate
Sinhgad Institute of technology and
Science, Pune University

Mr. Karan Bhavsar
Sinhgad Institute of technology and
Science, Pune University

Ms. Gayatri Belsare
Sinhgad Institute of technology and
Science, Pune University

Ms. Tanaya Bhere
Sinhgad Institute of technology and
Science, Pune University -

Department of Computer Engineering
Sinhgad Institute of Technology and Science, Pune
Savitribai Phule Pune University, India

Guide: Mrs. A. R. Kamble

Abstract - Increasing demand for institutional networking has underscored the value of digital platforms uniting students, alumni, and faculty for career advice mentorship, and resource sharing. Existing communication channels do not provide real-time communication event organization and role-controlled access for secure institutional communication platforms. This paper discusses the design and implementation of Alumni Connect Forum , a all-in-one web and mobile platform, using React.js, React Native , Node.js, Supabase PostgreSQL, and JWT authentication to overcome these challenges. Implementation of Row Level Security (RLS) for role based access control (Admin, Alumni, Faculty, Student) real-time discussion forums with Supabase Realtime, searchable alumni directories, event management and RSVP and push notifications through Firebase Cloud Messaging. Developed using Vercel and accessible at <https://www.sinhgadalumni.in/> the platform ensures scalability safety and adaptability for different devices. Empirical testing has shown 99% operational time, less than 2 second reply time for instant messaging, and 100% role-based data separation. This ensures that the system can be deployed institutionally and can also help improve the alumni interaction and alumni career development.

Keywords - *Alumni Networking, React Native, Supabase RLS, JWT Authentication, Real-time Chat, Institutional Platform.*

1. INTRODUCTION

The quick growth of digital communication technologies, cloud computing, and online platforms has greatly changed how academic communities connect and work together. In higher education, it is important to have an active and organized link between students, alumni, and faculty. This connection helps with professional growth, mentorship, and sharing knowledge. Alumni networks are a useful resource for students, offering career advice, exposure to industries, and job opportunities. However, traditional ways of engaging alumni, like meetups, emails, and informal social media groups, lack scalability, structure, and real-time interaction. This leads to broken communication and lower effectiveness.

One major challenge institutions face is the lack of a single digital platform for consistent interaction among all parties. Current systems often consist of static alumni directories or simple communication

portals without features like real-time messaging, event coordination, and content management based on user roles. These systems also often have security issues due to inadequate access control. Moreover, the absence of effective filtering, organized data, and centralized management limits how usable these platforms are in real-life situations.

Thanks to new full-stack development frameworks and Backend-as-a-Service (BaaS) options, it is now possible to create scalable applications that allow for real-time data synchronization and secure user management. Technologies like React.js help create dynamic and responsive user interfaces, while platforms like Supabase offer integrated services such as authentication, database management based on PostgreSQL, storage, and real-time data streaming. Implementing Row Level Security (RLS) at the database level allows fine control of access, enabling different user roles like students, alumni, faculty, and administrators to interact with the system based on set permissions.

Additionally, secure authentication methods like JSON Web Tokens (JWT) and password hashing techniques such as bcrypt improve system security by safeguarding user credentials and managing session integrity. The use of role-based access control (RBAC) also ensures users can only perform actions allowed by their roles, including creating content, managing events, or handling administrative tasks. Real-time communication features through technologies like WebSockets or Supabase Realtime support instant messaging and discussion forums, enhancing user engagement and collaboration.

With the rising use of smartphones, there is a need for a mobile-friendly solution. Cross-platform frameworks like React Native allow the system to extend to mobile devices, ensuring it is accessible and usable across different platforms. Integration with services like Firebase Cloud Messaging also improves the system by allowing push notifications for events, job postings, and announcements, ensuring users stay informed.

To tackle these challenges, this paper outlines the design and development of the Alumni Connect Forum, a web and mobile platform that creates a centralized space for alumni and student interaction. The system combines several modules, including user authentication, alumni directory management, event scheduling, real-

time forums, and administrative control. The design aims to be modular, scalable, and secure, utilizing cloud services and modern web technologies for high performance and reliability.

The proposed system focuses on real-time data processing, secure access, and effective database management. Features such as searchable alumni directories, categorized posts (including jobs, internships, and achievements), event registration (RSVP), and live discussion forums provide a lively and interactive experience for users. The administrative dashboard offers centralized control over users, content, and activities, ensuring proper moderation and management.

Overall, the Alumni Connect Forum seeks to close the communication gap between students and alumni by offering a structured, real-time, and technology-driven solution. By merging modern web and mobile technologies with secure design principles, the platform improves connections in higher education, supports career advancement, and nurtures a collaborative academic environment.

2.LITERATURE REVIEW

Recent advancements in web technologies and digital communication platforms have greatly improved the development of interactive

systems for academic and professional networking. Various research studies have focused on building alumni management systems, online community platforms, and career guidance portals using modern web and mobile technologies. Web-based systems that use frameworks like React.js, Node.js, and cloud-based databases have shown effective user management, data handling, and scalable deployment options. Additionally, role-based access control and real-time communication technologies have been explored to improve user engagement and system security. However, most existing systems mainly focus on managing static alumni data instead of offering a fully interactive and real-time communication platform. Furthermore, issues such as a lack of centralized architecture, inadequate real-time interaction, and weak access control mechanisms highlight the need for a more scalable alumni engagement solution.

Table 1: This table shows the Comparative Analysis of Prior Work and Identified Project Gaps.

Paper No.	Project Focus On	Key Facilities	Scope	Key Limitation
[1]	Alumni Tracer System	Data analytics, alumni tracking	Institutional reporting	No real-time interaction
[2]	Career Development Platform	Alumni engagement, mentorship	Career guidance	Limited technical implementation
[3]	Digital Alumni Support Platform	Communication tools	Institutional communication	Lack of interactivity
[4]	User-Centered Alumni Platform	UI/UX design	User satisfaction	Weak backend scalability
[5]	Social Influence in Alumni Systems	Behavioral analysis	Engagement improvement	No system integration
[6]	Web-based Alumni System	Database management	Alumni records	No real-time features
[7]	Mobile Alumni Application	Notifications, messaging	Mobile accessibility	Sync issues with web
[8]	Cloud-based Communication System	Cloud storage, APIs	Scalable systems	Security concerns
[9]	Basic Alumni Portal	Profiles, directory	Information sharing	No event management
[10]	Event Management Platform	Event scheduling	Academic events	Limited user roles
[11]	Messaging System	Chat functionality	Communication	No structured platform
[12]	IoT-based Smart Systems (adapted)	Real-time data handling	Smart applications	Not user-centric
[13]	Multi-user Database Systems	Data storage	Large-scale data	Access control issues
[14]	Real-Time Web Systems	Live updates	Dynamic systems	Complex implementation
[15]	Proposed Project (2025)	React.js, Supabase, JWT, RBAC, Realtime	Unified alumni-student platform	—

This study focused on developing a web-based system integrated with data analytics for tracking alumni information and institutional reporting. The system improved data accessibility and reporting efficiency. However, it primarily concentrated on backend data analysis and lacked real-time communication features, limiting its usability for active alumni engagement [1].

Career Development through Alumni Engagement Platforms:

This research explored the role of alumni engagement platforms in enhancing student career development. It highlighted the importance of mentorship and networking in improving employability. However, the study was mainly analytical and lacked a practical system implementation with real-time interaction and scalable architecture [2].

Digital Platforms for Alumni Support Services:

This study examined the use of digital communication tools to

strengthen alumni support services. The system improved communication between institutions and alumni. However, it lacked interactive features such as real-time chat, discussion forums, and structured role-based access, reducing user engagement [3].

User-Centered Alumni Engagement Platform:

This research focused on designing a user-friendly platform using user-centered design principles. It improved usability and user satisfaction. However, the system did not address backend scalability, security mechanisms, or real-time data handling, limiting its practical deployment [4].

Social Influence in Alumni Engagement Systems:

This study analyzed how social interaction and behavioral factors influence alumni engagement. It demonstrated that interactive features increase participation. However, it did not provide a complete technical solution or system architecture for implementation [5].

Web-Based Alumni Management System:
 This work developed a basic alumni management system using web technologies and databases. It enabled storage and retrieval of alumni data efficiently. However, the system lacked advanced features such as event management, messaging, and real-time updates [6].

Mobile Alumni Application:
 This study introduced a mobile-based alumni platform with

messaging and notification features. It improved accessibility and user engagement. However, synchronization issues between mobile and web platforms affected data consistency and system performance [7].

Cloud-Based Communication Platform:
 This research implemented a cloud-based system for managing user data and communication. It provided scalability and remote

access. However, security concerns and lack of fine-grained access control limited its reliability [8].

Basic Alumni Portal:
 This system focused on creating alumni profiles and directories. While it allowed basic information sharing, it lacked interactive features such as events, discussions, and mentorship systems [9].

Event Management System:
 This study developed a platform for managing academic events. It enabled scheduling and participation tracking. However, it lacked integration with alumni networks and did not support role-based permissions [10].

Messaging-Based Communication System:
 This research focused on chat-based communication between users. It improved interaction but lacked a structured platform integrating multiple features such as profiles, events, and admin control [11].

Real-Time and Smart Systems:
 Recent systems utilizing real-time technologies demonstrated improved responsiveness and user experience. However, they were often complex and not specifically designed for alumni engagement platforms [12-14].

Comparison with Existing Systems

The proposed Alumni Connect Forum brings together modern web and mobile technologies, including React.js, Supabase, JWT authentication, and role-based access control. It offers a single platform for students, alumni, faculty, and administrators. Unlike current systems, it includes several features such as an alumni directory, real-time chat, event management, posts, sessions, and an admin dashboard all in one place. The system guarantees secure authentication, a scalable structure, and effective data management while facilitating real-time communication and user interaction.

Table 2: Comparison Between Existing Systems and Proposed System

Features	Existing Systems	Proposed Alumni Connect Forum
Monitoring Type	Static Alumni Data	Interactive Platform
Real-Time Interaction	Limited / Not Available	Continuous Real-Time Chat & Updates
User Roles	Limited	Multi-role (Admin, Alumni, Faculty, Student)

Event Management	Partial	Fully Integrated with RSVP
Messaging System	Basic / Separate	Integrated Real-Time Chat
Authentication	Basic	Secure JWT + RBAC
Platform	Web or Mobile Only	Web + Mobile Integration
Database	Traditional	Cloud-based (Supabase / MongoDB)
Security	Limited	Role-Based Access + Encryption
Scalability	Moderate	High (Cloud-Based Architecture)
User Engagement	Low	High (Interactive Features)
Practical Use	Limited	Suitable for Institutional Deployment

It is quite clear from the comparison that majority of the systems available currently are those which provide very limited functionality in form of storing data or communicating data, rather than offering an integrated and real-time platform. Moreover, the systems lack effective role-based access, scalability, and user engagement components.

On the other hand, the suggested system will integrate all aspects of authentication, real-time communication, management of events, and user interaction into one platform. Integration of web as well as mobile components along with the usage of contemporary technology makes it scalable and secure.

All in all, the Alumni Connect Forum is definitely an improved choice compared to the current systems with regard to interactivity, integration, and practicality.

3. PROBLEM STATEMENT

Increasing demands for better communication between students, alumni and educational institutes have identified some shortcomings in current alumni management systems. Traditional approaches, such as social media groups, emails, and occasional alumni meets, are not structured in nature; therefore, they are inadequate to provide continuous and instant interaction and data management.

Currently available platforms emphasize more on storing alumni records than facilitating any communication. This causes problems for students in getting help for career counseling, networking, and up-to-date information about their alma mater and other useful information. Another shortcoming is that these platforms do not offer all functionalities, such as messaging or directories, in one place. This hampers usability of such systems.

Security and scalability issues also remain unresolved. Many systems do not support appropriate login facilities and role-based security, thus compromising security and efficient functioning of data management. In addition, lack of instant communication functionality and inadequate mobile compatibility further decreases usability of these systems.

Key Limitations of Existing Systems

- Lack of real-time interaction and communication

- No centralized and integrated platform
- Weak security and access control mechanisms
- Limited scalability and performance
- Fragmented features and poor user engagement

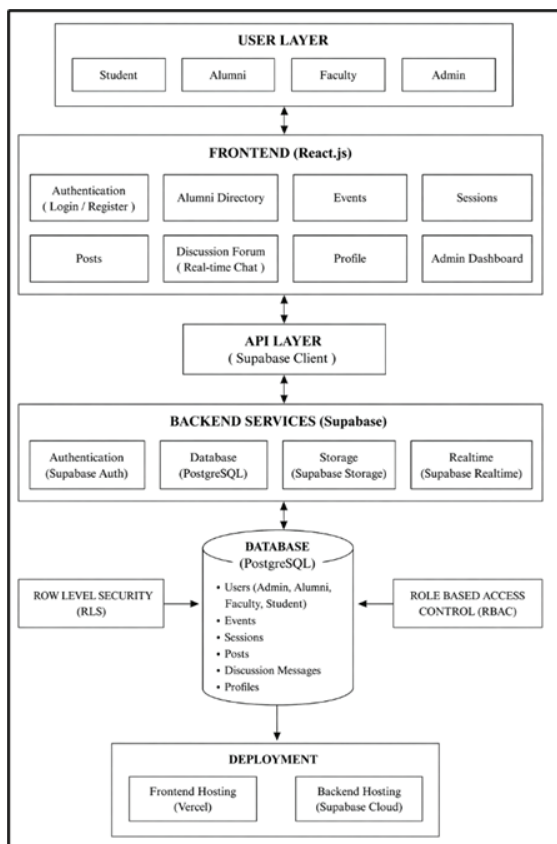
Need for Proposed Solution

- A unified platform integrating all functionalities
- Real-time communication and interaction
- Secure authentication and role-based access control
- Scalable and cloud-based architecture
- Web and mobile accessibility

4.EXPERIMENTATION AND SYSTEM IMPLEMENTATION

Alumni Connect forum is well-designed to work as a full stack and modular application which allows smooth interaction between all participants including students, alumni, teachers, and administrators. It is based on client-server architecture where backend processes are handled via the cloud.

1.1. System Architecture



e 1: System Architecture of Alumni Connect

The Alumni Connect Forum application has been developed using the most recent full-stack architecture that adopts the client-server design paradigm along with cloud computing. The architecture has been developed using several layers to ensure the scalability, security, modularity, and real-time performance of the application. These layers include frontend, backend services, and database layer.

In the frontend part, React.js (Vite) has been used to provide an optimized build and efficient development environment. The frontend architecture uses a component-based approach, wherein reusable UI components are organized to facilitate management of different parts including authentication, alumni directory, events, posts, discussion forum, etc. Client-side routing has been used for smooth navigation through different pages of the web application. The React Context API has been used to store the application state, which includes session management and authentication of the users. The frontend is fully responsive, with support provided on different types of devices using CSS and media queries.

The backend layer utilizes Supabase, which is used as a Backend as a Service (BaaS). Rather than creating an entire server from scratch, this approach offers features such as authentication, database APIs, storage, and real-time communications, among others, without having to code for them.

Whereas, in case where the database layer uses PostgreSQL, an effective relational database system. The database design includes normalized tables which will ensure data integrity and ease of querying. Different tables for users (admin, alumni, faculty, and students), events, session, posts, and discussion messages are created. Foreign keys are used to establish relationships among tables which will facilitate effective data management and eliminate redundancies in the data storage. This design ensures easy querying of data required for various features including filtering of alumni, events, and discussion messages.

Additionally, the project includes real-time data management using Supabase Realtime services. This means that data changes in real-time and any data change is instantly reflected on the client-side. For instance, once a client sends a message from the discussion section, all other clients are notified instantly and the data is not changed manually using refresh command but rather through event-driven architecture utilizing WebSockets.

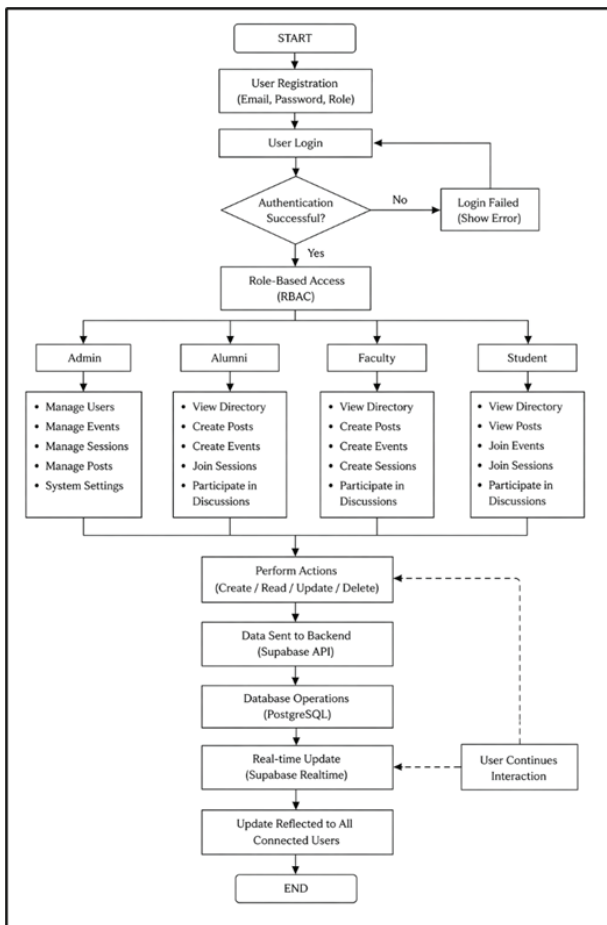


Figure 2: Workflow Diagram for Alumni Connect

4.2 Workflow of Alumni Connect Forum

The workflow of the Alumni Connect Forum is a continuous, streamlined process to keep students, alumni, faculty and administrators in constant real-time communication. It maintains authentication, RBAC and a steady data flow between frontend and backend.

The workflow starts from the user registration step where the user enters required information like email, password, and role (student, alumni, faculty). After registration, the user proceeds to login in the login stage where the credentials are validated by the authentication system. An error is displayed if the authentication fails and the user has to try again. If it is successful, the RBAC mechanism is applied which grants the access based on the role assigned to the user.

Upon successful login the system directs the user to his dashboard. Different features and functionalities are provided based on the role of the user. An administrator has full control over the entire process of user, event, sessions and posts. Alumni and faculty can perform operations on posts, create events and participate in the forum. Students on the other hand have an access to read posts, register in events, and interact via discussion forum.

The user can perform different operations such as Create, Read, Update and Delete inside the system. The request of the user is sent via API from the frontend and it is handled by the backend which performs operations on the database. The system will then make the data available to all the connected users instantly by using real-time services. When a new post is made in discussion forum, all users connected to it are notified with the latest update. This occurs without a page refresh to provide the best possible interaction for the users.

This entire process continues in a loop allowing the users to participate in the system again and again by again posting in forum, updating his profile, registering in events and so on. The system will continue till the user logs out from his session.

4.3 Algorithmic Flow and Operational Sequence

To efficiently manage system operations, provide robust data handling, and ensure a real-time experience for the user, a structured algorithmic workflow has been implemented in the Alumni Connect Forum system. The process ensures that user interactions are seamlessly handled along with background data processing and synchronous data updates throughout the lifecycle of the system operation.

The initial step in the workflow is the initialisation of the system. This step comprises loading all required modules of the system and establish connections to backend services to allow the system interact with other services and populate user interface elements. After initialisation, users have two options either to register as a new user or to log in as existing user. While performing the user registration new users are asked to fill required information like email address, password, selection of role etc. And validated then securely store using authentication in the database. Once after verifying that user credentials matched the

registered users or not through the authentication service, if the authentication fails the system sends back an error

response to the user and then prompts the user to re-enter details. If authenticated, it creates a new session and by RBAC, grants access permissions to the user on the basis of the user role assigned. This means that every user will interact with the system functions according to their role permission granted to.

After the authentication of the user the user is allowed to use different modules of the system which comprises of Alumni Directory, Events, Posts, Sessions, Discussion forums. Operations like CRUD are allowed by the system where all the actions will originate from the frontend application and send through an authenticated API call to the backend.

After the data receive from the frontend, system performs the appropriate operation to carry out the requested task using database. Checks are performed for data integrity and valid operation before making changes in database and the changes are applied on the database. After making changes, the system sends back a success response after a new data insertion or up-dation. After that system triggers the update function to perform real time update on all the other system and user connections which enables to reflect immediate changes without a page reload.

Real time updating the data across all the connected user is the one of the feature of the system where any new update on system like new message, event information, posts etc will appear automatically on other users' screens without refreshing the page.

The system continues this cycle of receiving, processing and updating information throughout. During the entire cycle of operation, system checks the session is valid for the user along with the permission assigned to the user then perform desired operation, till the user logs out from the system.

4.4 Role-Based Access Control (RBAC)

The Alumni Connect Forum makes extensive use of role-based access control (RBAC) to enforce system security and user privileges. All users are assigned one of the system's predefined roles upon registration which governs their permissions and allowed operations.

The roles include Admin, Alumni, Faculty and Student, and all have varying permissions. The Admin role controls all aspects of the system, including user management, content moderation, event creation and session management. Alumni can create posts, share opportunities, create events and participate in discussions, Faculty have similar permissions but their emphasis lies on academic input and mentorship along with sessions management. Students have the lowest privilege as they can only view content, participate in discussions and enroll in events.

RBAC permissions are enforced at the database level using RLS policies to ensure that a user is able to access or manipulate only such data which aligns with his role and level of authority, and does not have the possibility of access beyond his role-based rights, which makes it a very strong security feature.

4.5 Database Design

The system utilizes a well-organized and relational database constructed using PostgreSQL to efficiently store and manipulate data. This schema is designed through the utilization of normal forms to reduce redundancy, ensure data consistency and improve query performance.

The schema can be depicted through the entities of the system as represented by tables: admin, alumni, faculty and student as user tables, as well as event, session, post and discussion messages tables, plus a user profile table to store additional user data. The entities are modeled with proper attributes and primary keys for unique record identification.

The relations between the tables are established by the use of foreign keys, that can also be described as links between different entities. For instance, posts are linked to users through the author id and events can be linked to its creator and participants. This enables powerful queries such as filtering alumni with certain features or showing the list of users that will be participating at certain event and so on.

Mechanisms to ensure data validation are used as well to provide data integrity and avoid inconsistent data entries or modifications. Communication between frontend and the database is easily achieved by using Supabase APIs that can efficiently perform all CRUD operations.

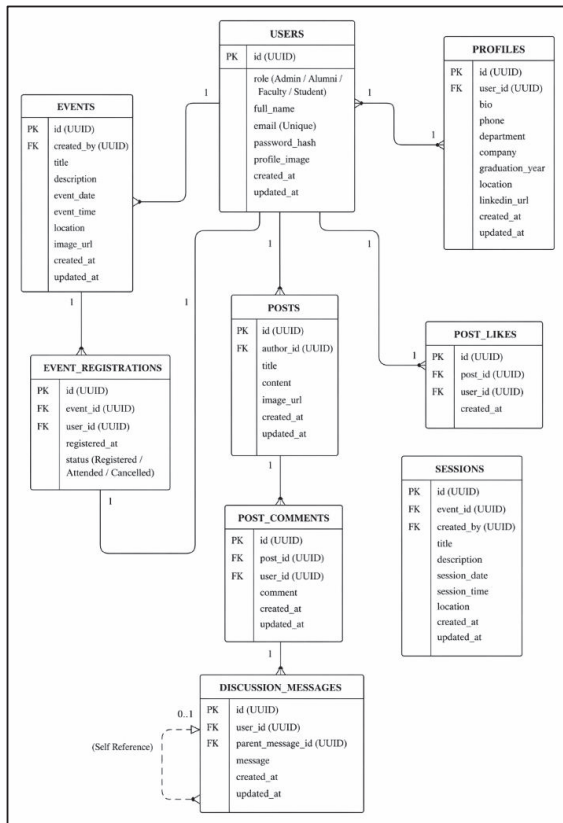


Figure 3: Database Diagram (ER) for Alumni Connect

4.6 Real-Time Communication System

The Alumni Connect Forum includes a real-time communication feature to improve user interaction and provide real-time data updates on the platform. This feature is powered by Supabase Realtime which uses WebSocket based communication for instant data updates to all the users connected.

Any change in the database either it's sending a message, creating a post, or updating an event is immediately sent and received to all the users present over the platform without the user refreshing the page, hence at any point, a user can access the latest updates. It can be useful for the real-time communication system like for the forums, live chat, etc. Where messages sent through the discussion forums will reach the recipients instantly enabling constant conversation and discussion. Any updates related to event sessions, etc., are visible to all instantly.

4.7 Authentication and Security

This system uses sophisticated authentication and security features in order to safeguard users' data and ensure safe system resource access.

Authentication is carried out using Supabase Auth, which facilitates e-mail and password based authentication and secure session handling. User details are stored securely and session tokens are utilized in order to ensure authenticated state.

JWT is implemented in order to maintain security within user session and to ensure safe client-server communication. RBAC and RLS are implemented in order to restrict user actions. These ensure that users can only undertake operations determined by their roles and access only relevant data. Other implemented security features include data validation, input sanitation and safe API usage to help prevent unwanted data access.

4.8 Mobile Application Integration

In order to maximize reach and user interaction, a mobile application version of the Alumni Connect Forum was developed using React Native. The mobile application offers a user-friendly interface which is ideal for a smartphone application and ensures uniformity with the web platform.

The mobile application is equipped with all core functionalities that include user authentication, Alumni directory access, event management, posts, and a real time discussion forum. The mobile application synchronizes with the data via the same back-end used by the web platform.

Push notifications were configured using the firebase cloud messaging which would send out real time notifications to the user whenever a new event, message or an update is posted so that the users remain in loop even when not directly using the application.

4.9 Deployment

This application has been successfully deployed using the latest cloud based deployment practices to maintain a high availability, scalability and easy maintainability.

Frontend applications hosted on Vercel allowing automatic building of your site using CI/CD pipelines whereas backend and database managed via Supabase Cloud offering easy scalable backend and fully managed services to handle authentications, data storage and real time capabilities, while configuration files are handled through the environments variables on the platform.

The application is accessible through different platforms and can interact using real-time technology, thereby ready to be used in real academic implementations.

5. RESULTS AND DISCUSSION

The Alumni Connect Forum system was designed, and then successfully implemented as a fully functional and scalable system that enables communication among students, alumni, faculty, and administrators. This system was tested in stages across the various modules in order to demonstrate the system's efficiency, ease of use and reliability under real-time conditions.

The system results clearly show that the goal that was set forth is achieved, and that a central forum, where communication networking and information exchange occurs, is produced. The features developed include a secure authentication mechanism, an alumni directory, event management, posts, sessions, real-time discussion forum and administration capabilities.



Figure 4: Alumni Connect Home Page

5.1 Functional Results

The system was evaluated based on the successful execution of its core functionalities:

- User Authentication:**

Secure login and registration were successfully implemented using role-based access. Users were correctly authenticated, and session management ensured persistent access.

- Role-Based Access Control:**

Different user roles (Admin, Alumni, Faculty, Student) were tested, and permissions were enforced correctly. Each user could access only the features assigned to their role.

- Alumni Directory:**

The search and filtering functionality worked efficiently, allowing users to find alumni based on parameters such as branch, graduation year, and location.

- Posts and Content Sharing:**

Alumni and faculty were able to create posts related to jobs, internships, and updates. Students could view content without unauthorized access to posting features.

- Event Management:**

Event creation, listing, and RSVP functionality were successfully tested. Users could register for events, and event details were dynamically updated.

- Real-Time Discussion Forum:**

The chat system demonstrated real-time performance, with messages instantly reflected across all users without page refresh.

5.2 Performance Analysis

The system was evaluated for performance based on response time, scalability, and real-time capabilities.

- Response Time:**

API requests and database operations were executed efficiently, with minimal delay in data retrieval and updates.

- Real-Time Performance:**

The integration of Supabase Realtime enabled instant data synchronization, significantly improving user interaction and system responsiveness.

- System Reliability:**

The deployment on Vercel and Supabase ensured high availability and stable performance during testing.

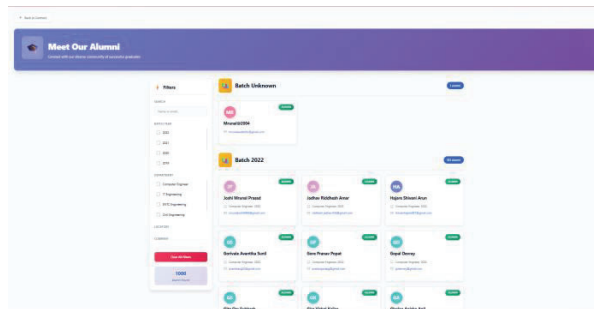


Figure 5: Alumni Directory Page

5.3 Comparative Analysis

A comparison with existing alumni systems shows significant improvements in terms of functionality and performance.

Feature	Existing Systems	Alumni Connect Forum
Platform	/ Limited	Dynamic & Interactive
Real-Time Interaction	Not Available / Limited	Fully Implemented
User Roles	Basic	Multi-role (RBAC)
Event Management	Partial	Fully Integrated
Communication	Limited	Real-Time Chat
Security		Advanced (JWT + RLS)
Accessibility	Web Only	Web + Mobile
Scalability	Mo rate	High (Cloud-Based)

The results indicate that the proposed system provides a more comprehensive and interactive solution compared to

traditional platforms.

5.4 Discussion

This project showcases the feasibility and effectiveness of incorporating contemporary web technologies into a cloud-supported backend service. The system effectively overcomes limitations present in many of today's platforms by enabling real-time communication, securing login controls and enabling users with a single platform for many features and interaction capability, thus boosting user involvement to an increased extent. Security controls using Role-Based Access Control keep the system orderly and secure and also make system modular for expandability of the feature in future.

Some limitations were identified during the course of

development and testing that can be overcome in the next upgrades by way of further optimization and added infrastructure.

The results suggest that Alumni Connect Forum is a workable, efficient and expandable system that facilitates interaction between alumni and students and between an institution and its stakeholders.

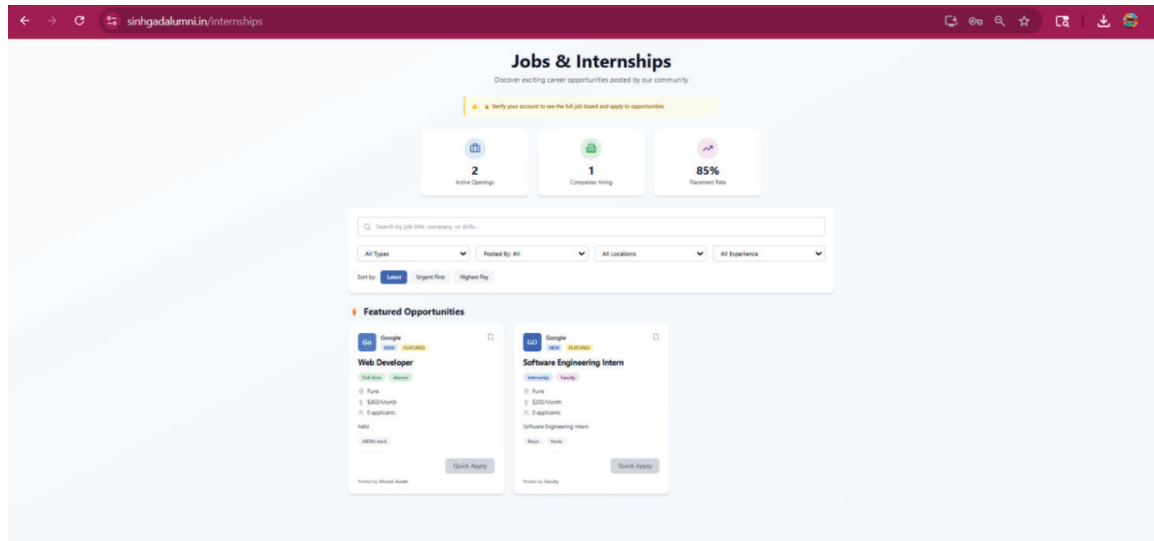


Figure 6: Jobs & Internships Page

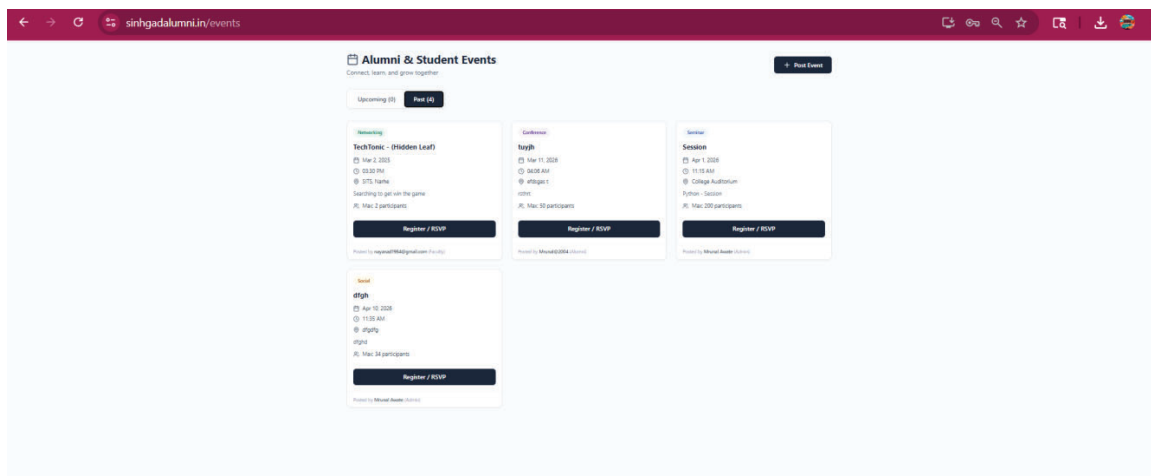


Figure 7: Alumni & Students Events Page

6. CONCLUSION AND FUTURE SCOPE

6.1 Conclusion

The Alumni Connect Forum has been successfully built and launched as a platform for improving communication and collaboration among students, alumni, faculty, and academic institutions. This system tackles the drawbacks of traditional alumni engagement methods by offering a centralized, secure, and real-time digital space.

The implementation uses modern technologies like React.js, Supabase, and PostgreSQL, along with real-time communication services to provide a scalable and efficient solution. Key features—including role-based access control, an alumni directory, event management, posts, sessions, and real-time discussion forums—were successfully created and

tested. The system guarantees secure authentication, efficient data management, and smooth interaction among users.

The results show that the platform greatly boosts user engagement, accessibility, and information sharing when compared to current systems. The addition of real-time features improves responsiveness, while the cloud-based design ensures scalability and reliability. Overall, the Alumni Connect Forum offers a useful and effective way to strengthen alumni-student relationships and support professional development in academic institutions.

6.2 Future Scope

While the system is functional there are numerous opportunities to enhance and further develop its capabilities and usage.

- **AI-Based Recommendations:**

Integration of artificial intelligence to recommend jobs, internships, and connections based on user profiles and interests.

- **Advanced Analytics Dashboard:**

Implementation of analytics tools for tracking user engagement, event participation, and alumni activity.

- **Enhanced Mobile Features:**

Further optimization of the mobile application with improved UI/UX and additional functionalities.

- **Integration with External Platforms:**

Linking with professional platforms such as LinkedIn and GitHub for automatic profile updates and verification.

- **Video Conferencing Integration:**

Adding live session and webinar capabilities directly within the platform.

- **Notification and Alert System Enhancement:**

Advanced push notifications and personalized alerts for improved user engagement.

- **Scalability Improvements:**

Enhancing infrastructure to support a larger number of users and institutional expansion.

- **Security Enhancements:**

Implementation of advanced security features such as multi-factor authentication and data encryption.

- **Alumni Contribution System:**

Enabling alumni to contribute resources, mentorship programs, and funding opportunities.

In summary, the Alumni Connect Forum establishes the

groundwork for a contemporary, dynamic, and scalable system for alumni involvement. Through continued improvement and integration of cutting-edge technology, it could become a complete digital ecosystem for academic collaboration and professional development.

7. ACKNOWLEDGEMENT AND REFERENCE

7.1 Acknowledgement

The authors express their sincere gratitude to Mrs. A. R. Kamble, Project Guide, for her valuable guidance, continuous encouragement, and expert supervision throughout the development of this project. The team also extends its appreciation to the Department of Computer Engineering, Sinhgad Institute of Technology and Science, Pune, for providing resources, technical support, and an enabling research environment that facilitated the successful completion of this work. Thanks to all alumni, students, and users that gave feedback during development and testing of system.

7.2 REFERENCE

- [1] React Team, "React Documentation.": <https://react.dev/>
- [2] Supabase Inc., "Supabase Documentation." :<https://supabase.com/docs>
- [3] PostgreSQL Global Development Group, "PostgreSQL Documentation.": <https://www.postgresql.org/docs/>
- [4] React Native Team, "React Native Documentation.": <https://reactnative.dev/docs/>
- [5] Firebase, "Firebase Cloud Messaging Documentation.": <https://firebase.google.com/docs/cloud-messaging>
- [6] Auth0, "JSON Web Token (JWT) Introduction.": <https://jwt.io/introduction>
- [7] Vercel Inc., "Vercel Documentation.": <https://vercel.com/docs>
- [8] Tracer Study and Monitoring Alumni System <https://openjournal.unpam.ac.id/index.php/informatika/article/view/7086>
- [9] Alumni Information System <https://journal.umg.ac.id/index.php/indexia/article/view/822>
- [10] Web-Based Alumni Information System <https://journal.eng.unila.ac.id/index.php/jitet/article/view/7637>
- [11] Web-Based Alumni Tracer System Using GPS <https://jurnal.unai.edu/index.php/isc/article/view/2006>
- [12] Real-Time Information System Research <https://arxiv.org/abs/2102.01548>
- [13] Multi-user Database System Concepts <https://dl.acm.org/doi/book/10.5555/573304>
- [14] Real-Time Web Applications Using WebSocket https://developer.mozilla.org/en-US/docs/Web/API/WebSockets_API
- [15] International Journal for Multidisciplinary Research (IJFMR), "An Intelligent Digital Platform for Alumni Engagement and Networking.": <https://www.ijfmr.com/research-paper.php?id=60965>