

Dairy Waste Water Treatment by using Natural Coagulants

Namrata S Naragundakar
Department of Civil Engineering,
Jain Institute of Technology, Davanagere.

Naghma N
Department of Civil Engineering
Jain Institute of Technology, Davanagere.

Mohan Naik B
Department of Civil Engineering,
Jain Institute of Technology, Davanagere

Padmavathi V
Department of Civil Engineering,
Jain Institute of Technology, Davanagere.

Basanth Kumar U
Department of Civil Engineering
Jain Institute of Technology, Davanagere.

Abstract— The dairy industry uses massive amounts of water to process raw milk for dairy products and generates roughly 3L of waste water per 1L of processed milk. The waste water discharge from this dairy industry contains a high concentration of organic material such as fats, carbohydrates, grease, protein, etc. Due to pollutants available in dairy waste water, if it is not properly treated then it may cause serious environmental issues. The present study focuses to treat Dairy Waste water with environment friendly natural coagulants like Moringa Oleifera, Neem leaves, Saw dust, Custard Apple seeds are in powdered form resulting an effective natural agent that is modification for highly turbid and untreated pathogenic water. Various doses of natural coagulants are evaluated for the efficiency of dairy wastewater treatment. On comparison various parameters like of TDS, chloride, pH, turbidity obtained for each coagulant. It was observed that moringa Oleifera seed powder showed best results with effect of pH varies as 9.08 – 4.42, TDS varies from 5.02 – 4.38 ppm, turbidity varies from 162 – 44.6 NTU are experimental found out with the extension. By varying dosage of coagulant that is Moringa oleifera seeds is recommended as eco friendly non toxic coagulant for dairy waste water treatment.

composite annual boom charge of approximately 6.2 percentage attain 209.96 million tonnes in 2020-21 from 146.31 million tonnes in 2014-15. However, over 3% near five million tonnes of milk get wasted because of unreliable power supply.

Karnataka daily produces of an estimated milk of 1.6 crore liters of milk, of which about 1.2 crore liters is “marketable supply”. KMF procures about 80 lakh liters, which translates to almost 70% of the milk produced. Before the introduction of the incentive scheme, KMF procured roughly 50% of the milk products in the state such as ice-cream, peda, ghee, butter, and so on. With the lock down in place, barring ghee and butter, there is no market for the rest of its bouquet of products, resulting in stocking up of unconverted milk. At present, 13484 dairy co-operative societies are functioning, with in the limit of 14 district milk federations, 23.78 lakh farmers are enrolled as members, out of which 8.37 lakh farmers are active members. The first of the dairy cooperative that make up KMF started in 1955 in Kudige, Kodagu district. KMF was founded in 1974 has Karnataka dairy development co-operation (KDDC) to implement a dairy development project run by the World Bank.

1. INTRODUCTION

Water is key substance for natural and human activities. Water is tasteless, odorless and nearly colorless chemical substance which is the main constituent of earth's streams, lakes and oceans. Which are used for drinking, industrial water supply, irrigation, water recreation for many other uses including being safely returned to environment. Dairy market volume world wide USD 489.74 billion. Global cow milk production volume per year 600 million metric tonnes. With 60% of the world population, Asia accounts for only 22% of global milk production. The total world production is more than 530 million tonnes for a population of about 400 billion amounts to an average annual per capita availability of 100Kg.

India is ranked 1st in milk manufacturing contribution 23 in step with cent of world milk manufacturing. Milk manufacturing within the US of A has evolved at a

2. OBJECTIVES

To study the characteristics of dairy waste water.

1. Preparation of natural coagulants like Moringa Oleifera seeds, Custard Apple, Neem Leaves, Saw Dust into powder form.
2. Using different dosage of natural coagulants for dairy waste water treatment for removal of pH, turbidity, Chloride, TDS test.
3. Determination of optimum dosage of coagulants.
4. To check the suitability of treated water for irrigation and used for other purposes.

3. MATERIALS AND METHODOLOGY

Dairy waste water collected from the Bhati dairy industry in Davanagere. The physio-chemical characteristics of samples were analyzed. Samples of dairy effluent were collected in clean containers of 5

liters of capacity and precautions will be taken for collection of wastewater. We collected the effluent from a wastewater collection tank in dairy industry.

3.1 MATERIALS USED

3.1.1 Moringaoleifera

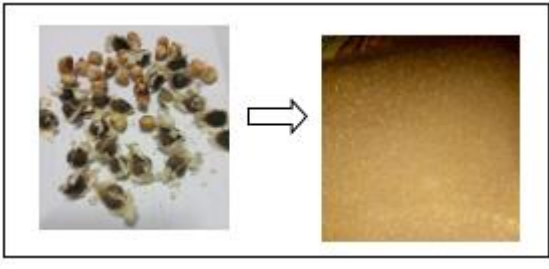


Fig 1: Moringa Oleifera seeds to powder form

Moringa oleifera serves as a vegetable, functional food, and medicinal plant due to its rich nutritional composition and diverse pharmacological activities. Moringa Oleifera works as a coagulant due to positively charged, water soluble proteins, which attract negatively charged particles (slit, clay, bacteria, toxin etc) resulting in “flocs” to settle to the bottom or be removed by filtration. Thus it plays an effective role as a coagulant in wastewater treatment.

3.1.2 Neem leaves powder



Fig 2: Neem leaves to powder form

Neem leaf powder (Azadirachta indica) has proven excellent performance within the elimination of heavy metal ions from dairy wastewater. The research on its adsorptive ability makes it appropriate for use as a bio adsorbent to lower the concentration of oil from produced water.

3.1.3 Saw dust



Fig 3: Saw mill wood to powder form

Sawdust, which is abundantly available and high-priced fabric and its uses are presently being investigated as an adsorbent to remove contaminants from dairy water. Chemical materials consist of oil, dyes, toxic salts and heavy metals, which are eliminated very effectively with natural materials.

3.1.4 Custard apple

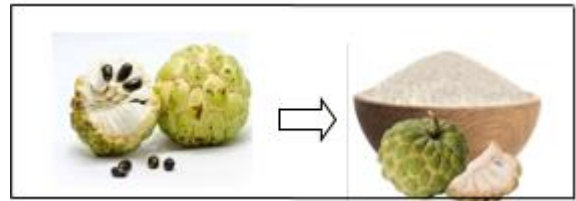


Fig 4: Custard apple seeds to powder form

Custard apple (Annona Reticulata tree) is an evergreen plant which is widely cultivated in India. The tree plays a role of natural air purifier. Each part of the tree has been reported to possess a variety of medicinal and germicidal properties. In the current work, finely ground custard apple seed powder (CASP) was used as an adsorbent.

3.1.5 Dairy waste water

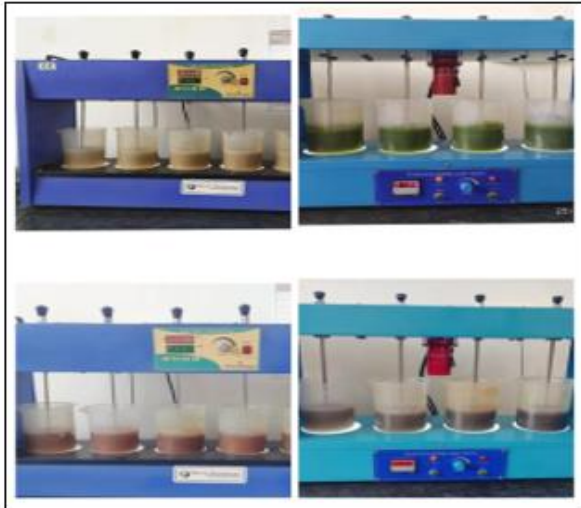


Fig 5: Source of collection of dairy waste water

The above figure indicates the source of dairy wastewater used for the project, Bhati Dairy Industry. Bhati Dairy Industry is located on Karnataka SH- 76 Dodda Bhati Davangere district. In this industry, the land area is 25.35 acres, its capacity is 0.60 Lakh LPD and MSL 602.5m. The main branch is in “SHIMOGA MILK UNION”.

Test Conducted For Dairy Wastewater Samples:

- 3.1 pH Test
- 3.2 Total dissolved solid
- 3.3 Turbidity
- 3.4 Chloride test



JAR TEST CONDUCTION

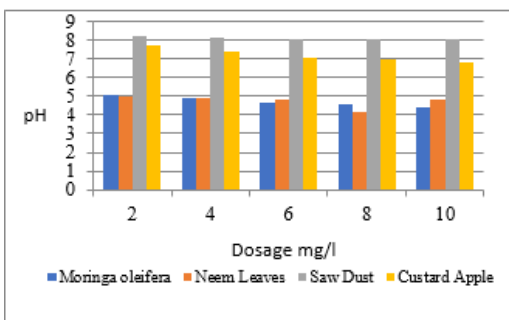
4. OBSERVATION AND RESULTS

The dealt with dairy water turned into configure for diverse parameters consisting of pH, Turbidity, Chloride, Total dissolved solids. As per IS 10500, 2012, the permissible restriction of pH for ingesting purpose is 6.5 to 8.5, and as in step with IS 2292, 1992 for irrigation reason is 5.5 to 9.0. Below desk represents the parameters of dealt with dairy water quality.

4.1 pH TEST

Table 1: Change in pH value

Dosage in gm/ml	Moringa oleifera	Neem leaves	Saw dust	Custard apple
2	5.08	5.02	8.24	7.68
4	4.88	4.87	8.12	7.35
6	4.65	4.81	8.08	7.06
8	4.58	4.16	8.06	6.95
10	4.42	4.78	8.0	6.80

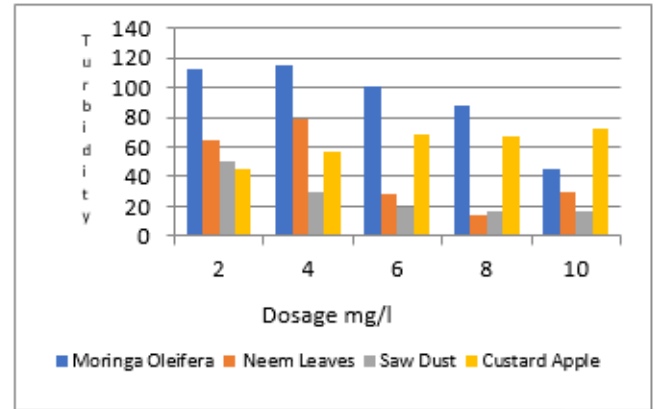


Graph1: pH reduction by different dosages for different coagulants

4.2 Turbidity Test

Table 2: Change in Turbidity values

Dosage in gm/ml	Moringa oleifera	Neem leaves	Saw dust	Custard apple
2	112.16	64.5	49.8	45.8
4	115.5	78.4	30.0	57
6	101.1	28.3	19.3	69
8	88.1	14.7	16.3	66.5
10	44.6	29.8	16.5	72

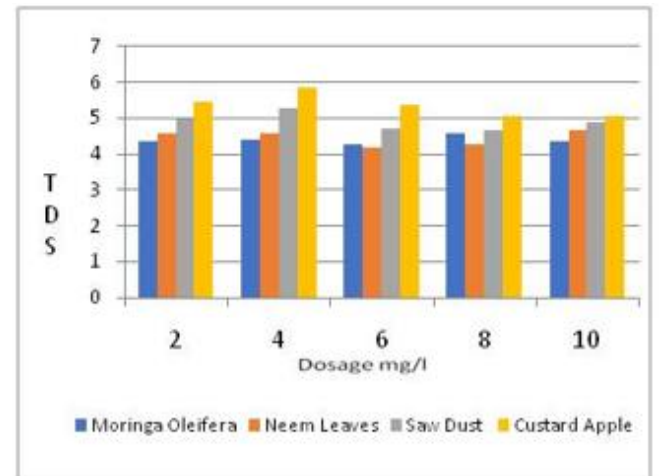


Graph2: Turbidity reduction by different dosages for different coagulants

4.3 TDS Test

Table 3: Change in TDS value

Dosage in gm/ml	Moringa oleifera	Neem leaves	Saw dust	Custard apple
2	4.36	4.58	4.96	5.47
4	4.42	4.57	5.29	5.86
6	4.29	4.2	4.72	5.39
8	4.58	4.28	4.66	5.05
10	4.38	4.66	4.90	5.08



Graph3: TDS reduction by different dosages for different coagulants

Table 4-Standard values of water

Parameters	pH	Turbidity	TDS
BIS irrigation water standards As per IS 10500 2012	6.0-7.5	-	-
BIS drinking water standards As per is 10500 2012	6.5-8.5	5	500
Treated dairy waste water by Moringa Oleifera seeds	9.08-4.42	44.6	4.38
Treated dairy waste water by Neem Leaves	9.08-4.78	29.8	4.66
Treated dairy waste water by Saw dust	9.08-8.0	16.5	4.90
Treated dairy waste water by Custard Apple seeds	9.08-6.80	72	5.08

CONCLUSION:

The dairy industry is one of the important industry. But the waste water generated within dairy industries is proven to have the problems like turbidity, oil and organic content so it is very important to treat dairy waste water to prevent hazardous on environment and human health. This project we used on economical way to treatment to treat dairy waste is by using natural materials such as Moringa Oleifera, Neem Leaves, Saw Dust, Custard Apple. So we carried out the treatment process by varying dosages as well as coagulants on comparison with the performance of each coagulant in removal of effluent is studied. Moringa Oleifera showed better coagulation and turbidity removal for dairy waste water. Effect of pH varies as 9.08 – 4.42, TDS varies from 5.02 – 4.38ppm, turbidity varies from 162 – 44.6 NTU are experimental found out with the extension of current study. Since we collected the dairy wastewater in a very small quantity from a dairy: we suggest that, by using Moringa oleifera as a coagulant instead of commercial alum, for treatment process, we can restrict the treatment expenses in a significant scale.

REFERENCE;

- [1] Ami.N. Dave, et.al. (2020), - "Use of Natural Coagulant for Dairy Wastewater Treatment".
- [2] B. Oudhi, A. et.al. (2020), - "Efficiency of Pozzolan and sawdust as biofilter in the treatment of wastewater".
- [3] S. Bhanupriya, M. et.al. (2020), - "Experimental investigation on treatment of dairy waste water using natural coagulants".
- [4] S. Gautamand G. et.al. (2020), - "Use of natural coagulants for industrial wastewater treatment".
- [5] M.Maheshwari, et.al. (2019), - "An experimental study on treatment of dairy effluents natural coagulants to reduce turbidity".
- [6] Himanshu petal, et.al. (2018), - "Evaluating Coagulation Efficiency of Natural Coagulant for Dairy Wastewater Treatment".
- [7] Mr. Pramod D, et.al. (2018), - "Use of natural Coagulants for Pre-treatment of Dairy Waste Water".
- [8] L. Gayatri, et.al. (2017), - "Treatment of dairy waste water by using natural coagulants".
- [9] Neethu P., et.al. (2017), - "Treatment of dairy waste water by moringa oleifera as natural coagulant".
- [10] Anju Sand K. et.al. (2016), - "Exploring the use of orange peel and neem leaf powder as alternative coagulant in treatment of dairy waste water".
- [11] D.Sivakumar, et.al. D. (2016), - "Eucalyptus wood saw dust activated carbon powder for treating dairy industry wastewater".
- [12] Arya Chandran J, et.al. (2015), - "Use of Papaya Seed as a Natural Coagulant for Water Purification". Chidnanda Patel, et.al. (2015), - "Treatment of dairy wastewater by natural coagulants".
- [13] D. Sivakumar, M. et.al. (2015), - "Treatment of Dairy Industry Waste Water using Eucalyptus Wood Saw Dust activated Carbon powder".
- [14] Kokila Parmar, et.al (2012), - "Effectiveness of Moringa oleifera as natural coagulant aid for waste water treatment of dairy industry".
- [15] G. N Sampathkumara et.al (2022), - "Grey water treatment by using Aloe vera plant"