

Behaviour of Concrete Mix with Wastepaper as an Additional Materials

Mamta¹,
¹Scholar, Civil Engineering Department
GITAM Kablana, India

Anshu²,
²Scholar,
Civil Engineering
Department GITAM Kablana, India

Amit Singhal³
³Assitant Professor,
Civil Engineering Department
GITAM Kablana, India

India is facing a serious challenge of in disposing of waste in many landfills throughout the country that are or at capacity. The landfill situation is resulting in high disposal cost and potential environment problems. This paper reports on the result of an investigation of utilization of wastepaper as an additional material in concrete mixes to be used for housing projects, for which it must be assured that the resulting concrete has proper the mechanical strength. Concrete mixes containing various contents of the paper were prepared and the basic strength characteristics such as compressive strength, splitting tensile, flexural, and water absorption were determined and compared with control mix. Four concrete mixes containing of the waste, which are control mix, 5%, 10%, 15% as an additional material to the concrete were prepared with ratios of 1:2:3 by weight of cement, sand and aggregates respectively. The maximum size of aggregates was 20 mm. In the earlier work on the subject during trial mix, it was shown that the addition of wastepaper reduces the mechanical strength of concrete. The test results also revealed that as the content of paper increased the water to cement ratio for the mix was also increased. With the addition of 25% of wastepaper in the proportion to the amount of cement, the mechanical strength decreased significantly. Overall, a high correlation was observed between density and strength of concrete containing paper.

Index Terms— Wastepaper, Compressive strength, Concrete mix, waste paper.

I. INTRODUCTION

This research is aim to evaluate the addition of wastepaper [1] to concrete mix, to study the effect of wastepaper on the strength of concrete, and to develop mixture proportion for concrete containing wastepaper. Wastepaper in has been used as a building materials for decades, especially cementitious matrices, since then a lot of research has been conducted to develop the mechanical properties like compressive, tensile, flexural strength. Most of the published works on recycling of paper are from paper mills [3] (Gallarado, 2006, Naik et al 2004). Use of wastepaper in structural concrete could become an economical and profitable substitute to landfills, incinerator, or other use option. This paper reports the results of research on the use of wastepaper in concrete.

II. MATERIALS

A. Cement and Fine Aggregates

Type I Portland cement which meeting the requirements of BS12:1996 was used in the research. River sand and crushed granite with 5mm and 20mm maximum size respectively were used in this research physical properties of sand and gravel are presented in

Table 1. The sand and gravel meet the requirements of ASTM C 33.

Properties	Wastepaper		Fine aggregate	Coarse aggregates
	Office paper	News paper		
Moisture content(%)	2.67	4.17	0.87	0.09
Specific gravity	0.98	0.81	2.59	2.61
Absorption(%)	197.54	207.50	1.00	0.70

B. Wastepaper

Wastepaper used in this study was collected from School of Housing Building, and Planning (HBP) Administration office. Physical properties of wastepaper are presented in Table 1.

C. Pulping the Wastepaper

Wastepaper was blend [4] using kitchen blender. Mechanical pulping was performed by immersing the wastepaper in room temperature water and subjected to medium speed rotation for not less than 1 min.

III. SPECIMEN PREPRATION

Mixing was done is accordance with ASTM C 192 [2] using a revolving-drum tilting mixer. First, coarse aggregates, some of mixing water, and pulped wastepaper were added into the mixer. The mixer was then started and, after it turned a few revolutions, it was stopped. Next, sand was added, and the mixer was started and stopped again after it turned a few more revolutions. Finally, cement and the rest of the mixing water were added.

After all of the ingredients were in the mixer, the fresh concrete was mixed for 3min. rest, followed by additional 2min. of final mixing. When necessary, water was incrementally added during the mixing process to modify the concrete mixture to achieve the desired slump.

The properties of freshly mixed concrete were determined, and test specimens were cast for the evaluation of strength of concrete. Specimens were demoulded 24h after casting and stored for air curing until the time of the test.

For each percentage additional with wastepaper, three cube specimens were tested for compression, another three cube specimens for tensile tests, and two prism specimens were tested for flexural test and water absorption test. A total of 64 specimens were made for the experimentation of this study. All of them were tested for 7and28 days curing period.

IV. MIXTURE PROPORTION AND RESULTS

A. Mixture Proportion

Four concrete mixes containing Portland cement, wastepaper, gravel with 20 mm maximum size, and river sand with maximum size of 5 mm , and water were studied and compare with control. Various proportions of the wastepaper were investigated by batching each mix with 0%,5%,10% and 15% by weight (Table2).

The mix proportions for all mixes were based on weight proportions of 1:2:3 (cement:sand:gravel). The water to cement ratio for the mixes containing the wastepaper was based on preliminary testing to obtain a workable mix with enough water because of high water absorption of the wastepaper.

Table 2. Mixture Properties

	0%	5%	10%	15%
Cement(kg)	12	11.5	11	10.5
Sand(kg)	24	23	22	21
Gravel(kg)	36	34.5	33	31.5
Wastepaper(kg)	0	0.58	1.1	1.58
Water(kg)	7.2	6.9	6.6	6.3
Additional water(kg)	0	0.9	2.2	1.1
Total water(kg)	0	7.8	8.8	7.4

B. Compressive strength

The test results showed that as the amount of wastepaper in the mix increased the compressive strength of the mix decreased [3]. As show in Figure 1, the 7 days compressive strength for various mixes with wastepaper decreased from 16.03 to 11.0 N/mm² but increased from 19.0 to 15.67 N/mm²(Figure 2) for 28 days strength. This reduction in the compressive strength is mainly due to high water to cement ratio of the mix.

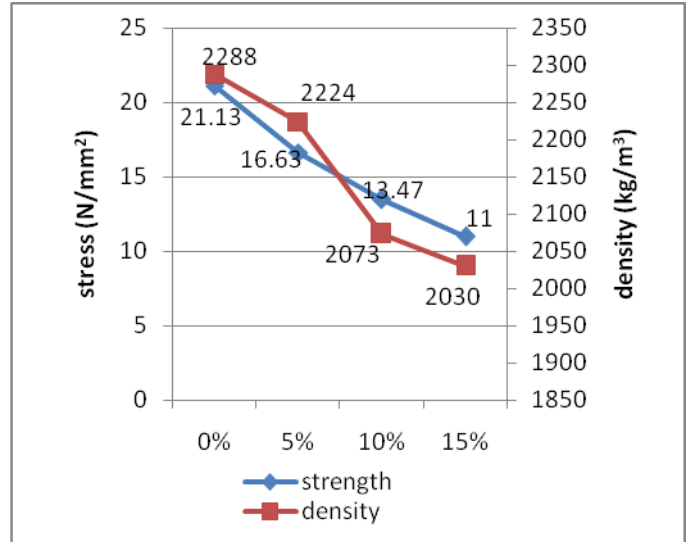


Figure1. Variation in compressive strength with density for composites subjected to different mixes in 7 days of curing.

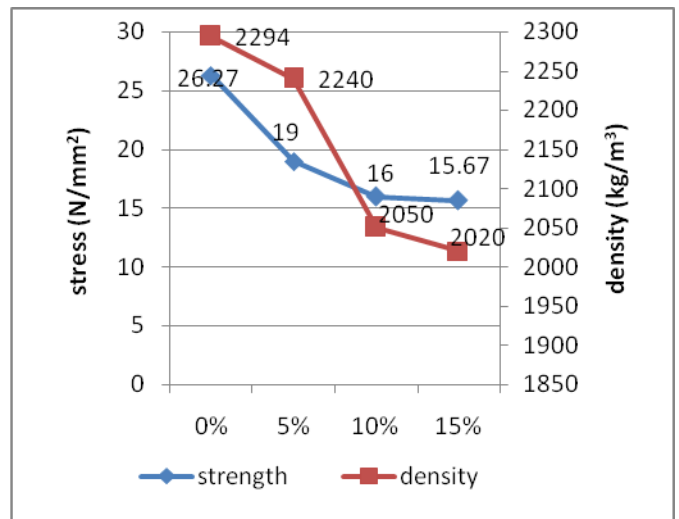


Figure2. Variation in compressive strength with density for composites subjected to different mixes in 28 days of curing.

C. Tensile strength

The tensile test result in Figure 3 and 4 indicate [4] that the highest tensile strengths were obtained in the mix with 5% wastepaper. At 7 days the concrete mix containing wastepaper was approximately 6.1% stronger in tension than control mix but 5.8% at 28 days, lower than 7 days.

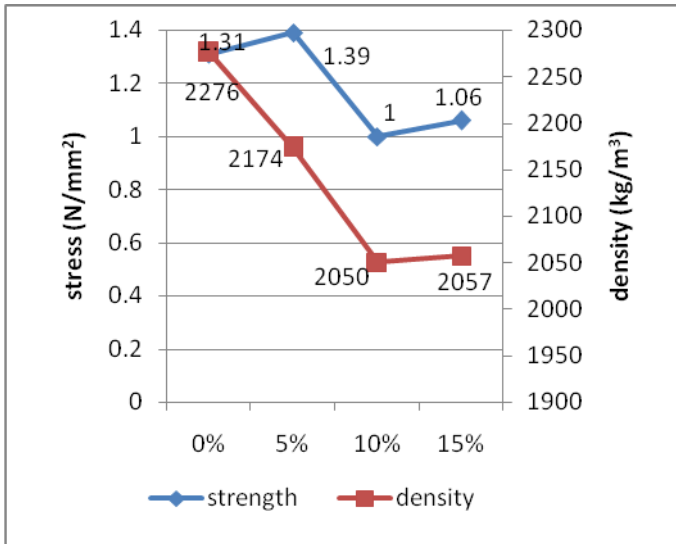


Figure3. Variation in tensile strength with density for composites subjected to different mixes in 7 days of curing.

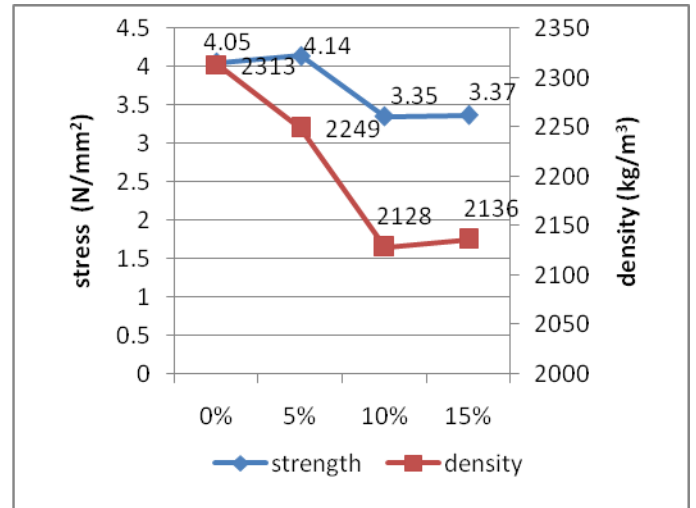


Figure5. Variation in flexural strength with density for composites subjected to different mixes in 7 days of curing.

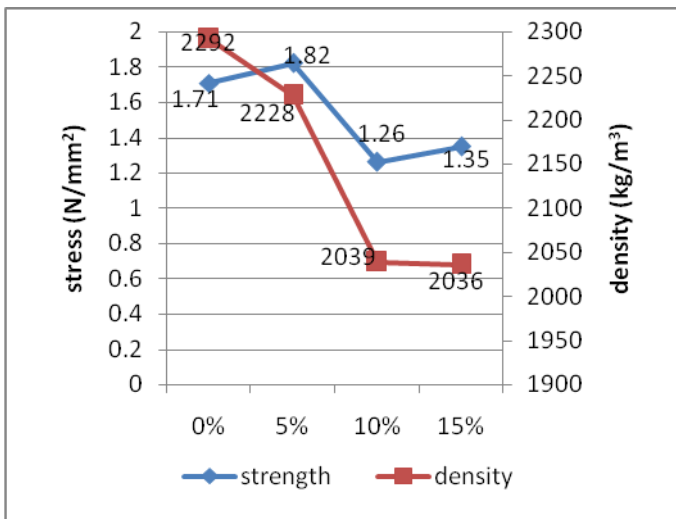


Figure4. Variation in tensile strength with density for composites subjected to different mixes in 28 days of curing.

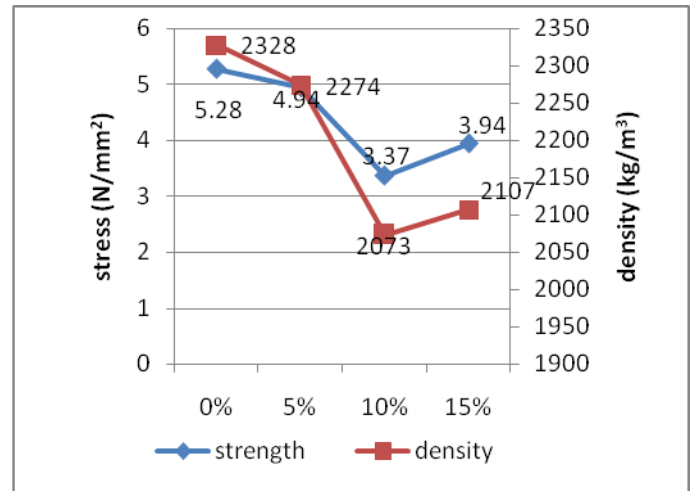


Figure6. Variation in flexural strength with density for composites subjected to different mixes in 28 days of curing.

D. Flexural Strength

The flexural strength of concrete mixes was determined according to BS 1881:Part 118:1983. The variations of flexural strength for all specimens shown in Figure 5 and 6. Mixture 5% and 15% showed higher strength than mixture 10%. This may attribute to lower water to cement ratio of 5% and 15% compared to 10%.

E. Water Absorption

Figure 7 and 8 showed that as the amount of wastepaper increased the water absorption of the concrete mixes also increased. The absorption rates for 7 days are between 13.9% - 62.3% when compared to control mix and between 10.8% - 118.4% for 28 days.

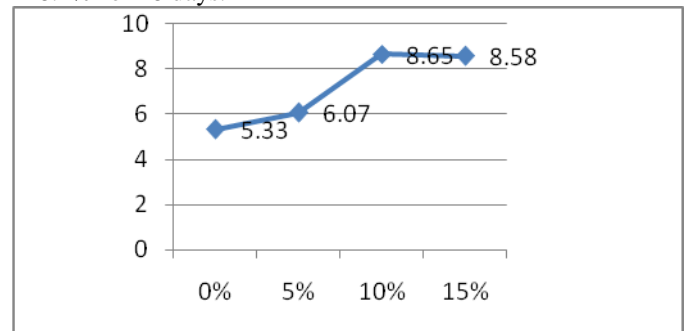


Figure 7. Variation in water absorption for composites subjected to different mixes in 7 days of curing.

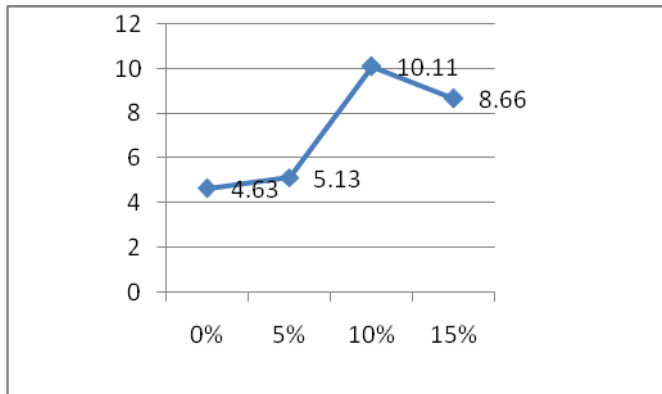


Figure8. Variation in water absorption for composites subjected to different mixes in 28 days of curing.

V. CONCLUSIONS

Based from results of study, it can be concluded that:

1. In general, each group of concrete mixes containing wastepaper, compressive strength, tensile strength, and flexural strength of concrete decreased with increase of the amount of wastepaper.
2. Concrete with 5% wastepaper showed higher tensile strength and flexural strength than concrete mix.
3. Good relationship was observed in compressive, tensile, and flexural strength of concrete mixes containing wastepaper.
4. Good relationship was observed between density and strength of concrete mixes containing wastepaper.

VI. REFERENCES

- [1] Bai, J.et al. (2003). Compressive Strength And Hydration of Wastepaper Sludge Ash-Ground Granulated Blastfurnace Slag Blended Pastes, Cement and Concrete Research, Volume33, Issue 8, August 2003, Pages 1189-1202.
- [2] Chun Y.et al.(2006). Pulp and Paper Mill Fibrous Residuals in Excavatable Flowable Fill,
- [3] Gallardo, R.S., Adajar, M.A. (2006). Structural Performance of Concrete with Paper Sludge as Fine Aggregates Partial Replacement Enhanced With Admixture.
- [4] Kraus, R.N. et al. (2003). Concrete Containing recycled Fibers from Pulp and Paper Mills.