

A Review on Different FACTS Devices used in Electrical Power System

Anant S. Shelke

Electrical Engineering Department
Government College of Engineering
Aurangabad, India

Dr. Anita A. Bhole

Electrical Engineering Department
Government College of Engineering
Aurangabad, India

Abstract—With rapidly increasing industrialization and urbanization electric power demand is increasing. Power system is subjected to supply these loads without interruption. Sometimes disturbances such as system faults, sudden addition or removal of large load, etc. cause instability in power system. There are chances of power system failure if these disturbances are not cleared. Flexible AC Transmission System (FACTS) technology is used to compensate parameters due to disturbance and helps to improve system stability. This paper is about a brief description of different FACTS devices like Static Synchronous Compensator (STATCOM), Static VAR Compensator (SVC), Static Synchronous Series Compensator (SSSC), Thyristor controlled series capacitor (TCSC), Unified Power Flow Controller (UPFC) and Interline Power Flow Controller (IPFC).

Keywords—FACTS; Real power; Reactive power; Voltage Source Converter (VSC).

I. INTRODUCTION

Electric power system consists of three parts; generation, transmission and distribution system. Power plants are situated nearer to fuel storages. Usually, electric loads are far away from generating units. Transmission lines transfer power from generating unit to load center. Transmission occurs at High Voltage or Extra High Voltage level [1].

With rapidly increasing industrialization and urbanization electric power demand is growing continuously. This is causing more stress on existing system. Electric power systems are interconnected through transmission lines to form power grid to overcome this issue. Power grid helps in increasing diversity of load; sharing available resources and operating generating units economically. It improves power system efficiency and reliability [2].

A stable power system remains in equilibrium under normal operating condition and regains its new acceptable state of equilibrium after disturbance. It supplies power uninterrupted. Disturbances like system faults, sudden addition or removal of load, etc. makes system unstable. There are chances of system failure if effect of these disturbances is not cleared out. System failure is unwanted and uneconomical.

Flexible AC Transmission System (FACTS) technology is used to overcome disturbance effect. FACTS devices consist of power electronic devices and controllers. Purpose of FACTS devices is to improve power system stability is by controlling System parameters such as voltage (V), power angle (δ) and series impedance (X) with help of Voltage Source Converter (VSC) which is inverter. FACTS devices are classified as i) shunt compensating devices; ii) series compensating devices and iii) combined devices. Some Facts

devices like STATCOM, SVC, SSSC, TCSC, UPFC and IPFC are used to control real and reactive power through system [3-15].

II. POWER FLOW EQUATION IN TWO MACHINE SYSTEM

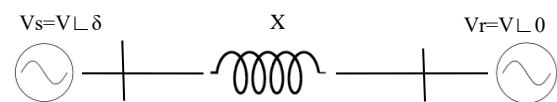


Fig. 1. Two machine system

In two machine system, voltage at sending end (V_s), voltage at receiving end (V_r), phase angle difference (δ) and impedance of transmission line (X); power equations are expressed as

$$P = \frac{V_s V_r}{X} \sin \delta$$

$$Q = \frac{V_s^2}{X} - \frac{V_s V_r}{X} \cos \delta$$

If $|V_s| = |V_r| = V$ then

$$P = \frac{V^2}{X} \sin \delta$$

$$Q = \frac{V^2}{X} - \frac{V^2}{X} \cos \delta$$

$$Q = \frac{V^2}{X} (1 - \cos \delta)$$

Real power depends upon phase angle δ and reactive power depends upon voltage [1-2].

III. STATCOM

STATCOM is a shunt compensating device. It feeds static reactive power in parallel with transmission lines through connected bus.

Different components of STATCOM are: i) DC energy source such as battery or capacitor bank; ii) VSC i.e. voltage inverter to convert DC supply into AC supply; iii) Control Unit to generate pulses for inverter with the help of Pulse Width Modulation (PWM) technique; iv) Transformer to link output voltage to line voltage.

During disturbances STATCOM supplies Reactive power requirement. It improves voltage stability [3].

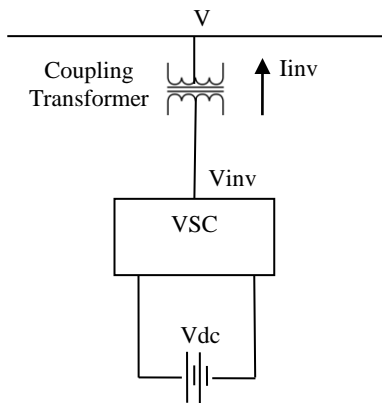


Fig. 2. Block Diagram of STATCOM

From Fig.2 power equations are

$$P = \frac{V V_{inv}}{X} \sin \delta$$

$$Q = \frac{V^2}{X} - \frac{V V_{inv}}{X} \cos \delta$$

Where V_{inv} and V are inverter output voltage and bus voltages respectively and X is reactance of line from inverter to bus.

When system bus voltage (V) reduces i.e. $V < V_{inv}$, STATCOM supplies reactive power required acting as a source. When system bus voltage (V) increases i.e. $V > V_{inv}$, STATCOM absorbs reactive power acting as a sink. When both voltages are equal i.e. $V = V_{inv}$, reactive power transfer doesn't take place. Thus, reactive power compensation is done to control voltage at bus and through transmission system [4].

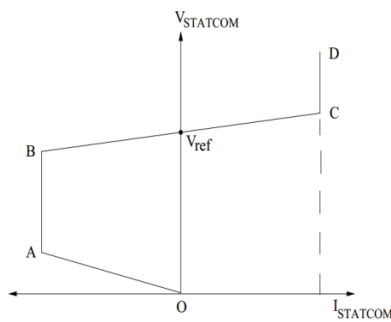


Fig. 3. V-I Characteristics of STATCOM

STATCOM shows constant current characteristics. First quadrant of graph shows inductive mode while second capacitive mode.

IV. SVC

SVC is shunt compensating device. It supplies required reactive power to bus connected in parallel.

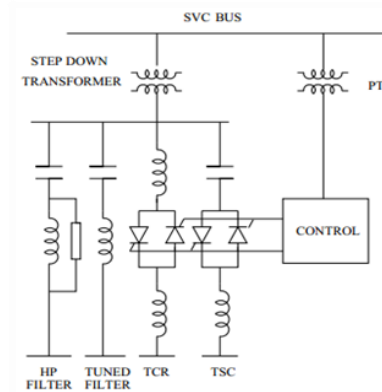


Fig. 4. Typical SVC Configuration

It consists of i) capacitor which is either fixed or switched with help of thyristor; ii) reactor which is controlled by thyristor; iii) control unit to generate signals and iv) coupling transformer [5-6].

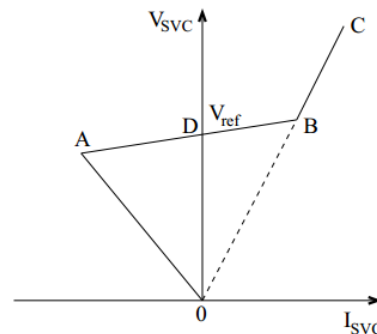


Fig. 5. V-I Characteristics of SVC

Slope of line OA gives susceptance of capacitor indicates Capacitive mode of operation and Slope of line OBC gives susceptance of reactor indicates inductive mode of operation [1].

V. SSSC

SSSC is a series compensating device. It controls real power flow through transmission line. Different components of SSSC are- i) VSC to convert DC into AC Supply; ii) DC energy Source; iii) controlling unit and iv) series transformer to connect it with line [7].

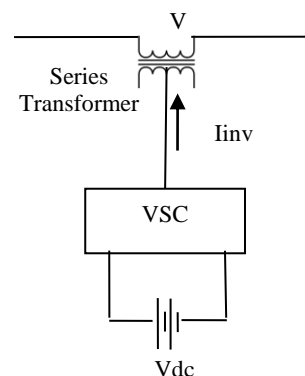


Fig. 6. Basic configuration of SSSC

Sinusoidal voltage V , 90° out of phase with line current, is fed to transmission line. When voltage leads by 90° , it gives

inductive reactance. When voltage lags by 90° , it gives capacitive reactance. Power transfer capacity of line is controlled with injection of series voltage which changes impedance of line [8].

VI. TCSC

TCSC is series compensating device. A capacitor is in series with transmission line. Thyristor-controlled reactor (TCR) is in shunt with capacitor.

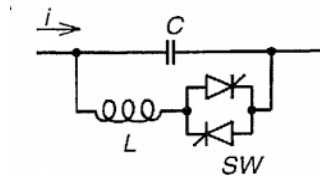


Fig. 7. Configuration of TCSC

Value of capacitance is varied by connecting inductive reactor in parallel with the help of thyristor. TCSC has capability of providing positive as well as negative reactance. It changes overall impedance of transmission line. Power flow is controlled by varying impedance [9-10].

VII. UPFC

UPFC is combined series-shunt device. Two VSCs are used; one connected in series with transmission line and other in shunt. These two VSC are connected through a common capacitor. Capacitor keeps voltage across VSC constant [11].

One inverter control reactive power through shunt transformer for voltage improvement as STATCOM. Another feeds symmetrical voltage through series transformer to control impedance and phase angle as SSSC. Thus, UPFC controls both voltage enhancement and power flow [12].

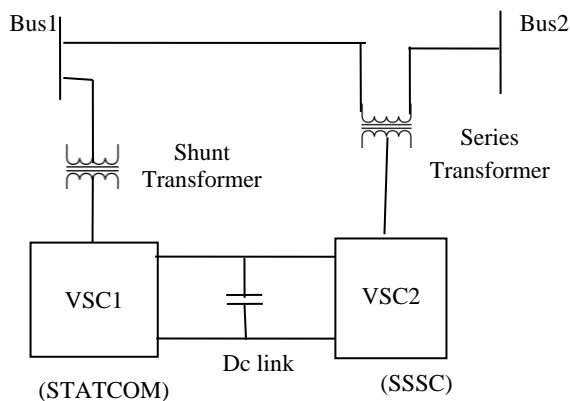


Fig. 8. Block Diagram of UPFC

VIII. IPFC

IPFC is a combined compensating device. It controls power flow through transmission system having multiple lines. SSSCs are used to transfer real and reactive power in between transmission lines [13].

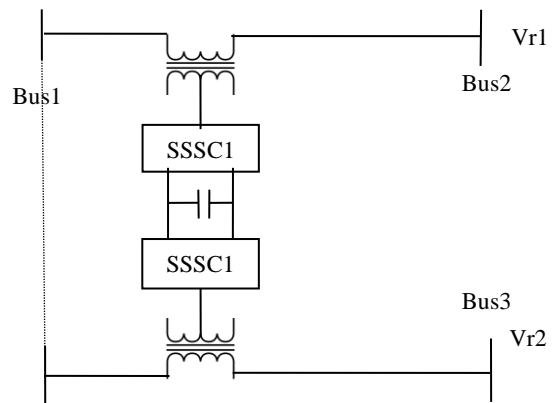


Fig. 9. Block Diagram of Two Line IPFC

Typical two-line IPFC has two SSSC connected to a common capacitor. Series transformers are used to couple outputs to transmission lines.

Injection of series voltage with line voltage controls real power flow. IPFC shifts load from overloaded line to under loaded lines. This helps to overcome resistive voltage drop across transmission line. It helps to improve voltage level. As voltage affects reactive power, reactive power gets improved [14-15].

IX. CONCLUSION

There are different facts devices used to improve power system stability under disturbances. Shunt FACTS devices such as STATCOM and SVC improve voltage stability by reactive power compensation and keep voltage at bus nearly constant. Series FACTS devices like SSSC and TCSC are used for real power compensation. While both real and reactive power compensation is achieved from combined devices like UPFC and IPFC.

REFERENCES

- [1] K R. Padiyar, *FACTS Controller in Power Transmission and Distribution*, New Age International (P) Ltd. Publisher, Copyright ©2007, ISBN (13): 978-81-224-2541-3.
- [2] N. G. Hingorani and L. Gyugyi, *Understanding FACTS: Concepts and Technology of Flexible AC Transmission Systems*, IEEE Power Engineering Society, IEEE Press, NY 1999.
- [3] Rajib Lochan Dash, Sasmita Tripathy, Banaja Mohanty, Prakash Kumar Hota, "Power Quality Improvement of Grid Connected Wind System with STATCOM," 2021 1st International Conference on Power Electronics and Energy (ICPEE), Bhubaneswar, India, 2021, pp. 1-6.
- [4] Shiva Pujan Jaiswal, Sunman Lata, Shashank Singh, Sandeep Kr Singh, Jay Singh, "Operating Strategies Optimization of STATCOM for Improvement of Voltage Profile," 2021 International Conference on Computing, Communication and Intelligent System (ICCCIS), Greater Noida, India, 2021, pp. 840-844.
- [5] M. Karami, N. Mariun, M. Z. A. Ab Kadir, "Determining Optimal Location of Static Var Compensator by Means of Genetic Algorithm," International Conference on Electrical Control and Computer Engineering, Malaysia, 2011, pp. 172-177.
- [6] Zhengchao Liu, Xia Cheng, Deyu Cai, Lei Ding, "The Application of SVC for Damping Inter-area Oscillations," 2016 IEEE PES Asia-Pacific Power and Energy Conference (APPEEC), Xi'an, China, 2016, pp. 2236-2239.
- [7] Kush Varshney, Ankush Kumar, Qurratulain, Salman Hameed, Emad Jamil, "Performance Analysis of SSSC in a Multi-Machine Transmission Network during different Fault Conditions," 2019 International Conference on Electrical, Electronics and Computer Engineering (UPCON), Aligarh, India, 2019, pp. 1-6.

-
- [8] Kumari Gita, Atul Kumar, "SSSC Incorporation in Power System Network for Security Analysis," IEEE 7th Uttar Pradesh Section International Conference on Electrical, Electronics and Computer Engineering (UPCON), India, 2020, pp. 1-6.
- [9] Babatunde O. Adewolu, Akshay Kumar Saha, "Available Transfer Capability Enhancement with FACTS: Perspective of Performance Comparison," 2020 International SAUPEC/RobMech/PRASA Conference, Cape Town, South Africa, 2020, pp.1-6.
- [10] K. Sunil Kumar, S. Balamurugan, N. Janarthanan, "Enhancement of TCSC Characteristics," International Conference on Intelligent Computing, Instrumentation and Control Technologies (ICICICT), Kerala, India, 2017, pp. 1369-1372.
- [11] Sumitkumar D. Choudante, A. A. Bhole, "A Review: Voltage Stability and Power Flow Improvement by Using UPFC Controller," 2018 International Conference on Computation of Power, Energy, Information and Communication (ICCPEIC), Chennai, India, 2018, pp. 462-465.
- [12] Akshay Kr. Dwivedi, Shelly Vadhera, "Reactive Power Sustainability and Voltage Stability with Different FACTS Devices using PSAT," 2019 6th International conference on Signal Processing and Integrated Networks (SPIN), Noida, India, 2019, pp. 248-253.
- [13] T.Vishnu Charan, Alivelu M.Parimi, "Comparision of Interline Power Flow Controller with Line Reactor and SSSC in a 400kV Transmission Line," 2018 3rd International Conference for Convergence in Technology (I2CT), Pune, India, 2018, pp. 1-6.
- [14] Vishnu Charan Thippana, Alivelu Manga Parimi, Chandram Karri, "Placement of IPFC for Power Loss Reduction in Transmission lines using Firefly Algorithm," 2020 IEEE 17th Indian Council International Conference (INDICON), New Delhi, India, 2020, pp. 1-6.
- [15] Aditya Chorghade, V. A. Kulkarni Deodhar, "FACTS Devices for Reactive Power Compensation and Power Flow Control- Recent Trends," 2020 International Conference on Industry 4.0 Technology (I4Tech), Pune, India, 2020, pp. 217-221.