

Ai-Powered Innovations in Electric Vehicle Battery Charging Systems

Dr. B. Prakash Ayyappan

Associate Professor, Department of EEE, Sri Bharathi Engineering College for Women, Kaikkurichi, Pudukkottai, Tamilnadu.

Abstract: The rapid adoption of Electric Vehicles (EVs) has significantly increased the demand for efficient, reliable, and intelligent battery charging systems. Artificial Intelligence (AI) plays a crucial role in optimizing charging processes, improving battery lifespan, and enhancing overall system performance. This paper explores the application of AI techniques such as machine learning, deep learning, and predictive analytics in EV battery charging systems. AI enables real-time monitoring, adaptive charging strategies, and intelligent energy management by analyzing battery health, state of charge (SoC), and usage patterns. The study compares traditional charging methodologies with AI-driven approaches, highlighting improvements in efficiency, reduced charging time, and minimized degradation. Furthermore, AI facilitates integration with smart grids, enabling demand response and load balancing. The results demonstrate that AI-based charging systems provide superior performance, reliability, and sustainability compared to conventional methods. This paper concludes that AI is a transformative technology in the evolution of EV infrastructure and energy optimization. **Keywords:** Artificial Intelligence (AI), Electric Vehicles (EVs), Battery Management System (BMS), Machine Learning, Smart Charging, State of Charge (SoC), State of Health (SoH), Energy Optimization, Predictive Analytics, Smart Grid Integration

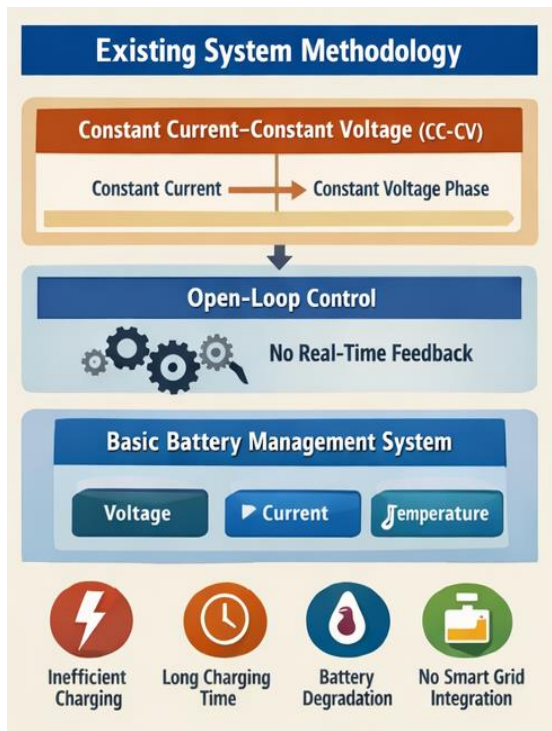
1. INTRODUCTION

The global shift towards sustainable transportation has accelerated the adoption of Electric Vehicles (EVs). A key component of EV performance is the battery system, which requires efficient charging mechanisms to ensure longevity and reliability. Traditional charging methods often rely on fixed algorithms and lack adaptability to varying environmental and operational conditions. Artificial Intelligence (AI) introduces advanced capabilities in EV charging by enabling intelligent decision-making, predictive analysis, and automation. AI-driven systems can analyze real-time data such as temperature, voltage, current, and user behavior to optimize charging cycles. This leads to reduced energy consumption, improved battery health, and enhanced user convenience. With the increasing complexity of EV ecosystems, including renewable energy integration and smart grid connectivity, AI becomes essential for managing charging infrastructure efficiently. This paper discusses the

role of AI in transforming EV battery charging systems and highlights its advantages over conventional methods.

2. EXISTING SYSTEM

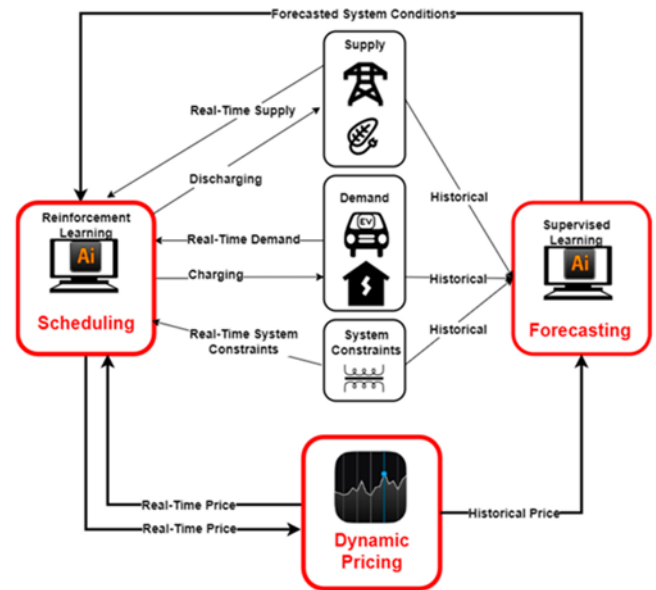
Traditional electric vehicle (EV) battery charging systems are primarily based on predefined control strategies and rule-based algorithms that operate with limited adaptability. One of the most widely adopted techniques is the Constant Current–Constant Voltage (CC–CV) charging method, in which the charging process begins with a constant current phase that rapidly increases the battery's state of charge. Once the battery voltage reaches a specified threshold, the system transitions to a constant voltage phase, during which the current gradually decreases until the battery is fully charged. This method is popular due to its simplicity, ease of implementation, and reliability; however, it does not account for variations in battery condition or environmental factors. In addition to CC–CV charging, many traditional systems employ open-loop control mechanisms. These systems operate without real-time feedback from the battery, relying instead on preset parameters and fixed charging profiles. As a result, they are unable to dynamically adjust charging behavior based on changes in battery temperature, aging, or usage conditions. This lack of adaptability can lead to inefficient charging and potential safety concerns under varying operating conditions. Basic Battery Management Systems (BMS) are also an integral part of conventional EV charging setups. These systems monitor essential parameters such as voltage, current, and temperature to ensure safe operation. They provide fundamental protection mechanisms, including prevention of overcharging, deep discharge, and overheating. However, these traditional BMS implementations are limited in their functionality, as they do not incorporate predictive analytics or advanced optimization techniques to enhance battery performance and lifespan.



The existing EV charging systems suffer from several significant limitations. They often result in inefficient energy utilization due to their inability to optimize charging dynamically. Charging times tend to be longer because the systems follow fixed profiles rather than adaptive strategies. Moreover, improper charging cycles can accelerate battery degradation, reducing overall battery life. The lack of intelligence and adaptability further restricts their performance, particularly in complex and changing environments. Additionally, these systems do not support integration with modern energy infrastructures such as smart grids or renewable energy sources, limiting their potential for sustainable and efficient energy management.

3. PROPOSED SYSTEM

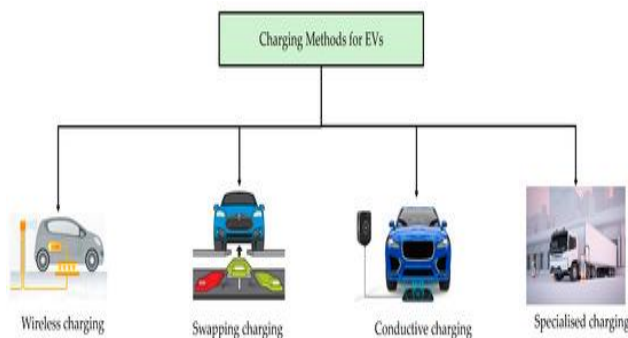
The proposed methodology introduces an intelligent electric vehicle (EV) battery charging framework by integrating advanced Artificial Intelligence (AI) techniques to overcome the limitations of conventional systems. Machine Learning (ML) plays a fundamental role in this framework by enabling the system to learn from historical battery data and predict future behavior without explicit programming. In EV charging applications, ML models are trained using extensive datasets that include charging and discharging cycles, temperature variations, voltage and current profiles, and user driving patterns. By analyzing these



parameters, the system identifies hidden patterns and relationships, allowing accurate prediction of critical battery metrics such as State of Charge (SoC) and State of Health (SoH). Additionally, ML techniques can estimate charging time and analyze user behavior to optimize charging schedules. For instance, if the system learns that a user typically charges the vehicle during nighttime, it can automatically schedule charging during off-peak hours to reduce electricity costs and grid load. This predictive capability enhances battery monitoring accuracy, enables predictive maintenance, and significantly improves overall charging efficiency.

Deep Learning (DL), an advanced subset of Machine Learning, further enhances the system by enabling complex pattern recognition and optimization. Utilizing multi-layered Artificial Neural Networks (ANNs), DL models can process both real-time and historical data simultaneously and effectively capture nonlinear relationships in battery behavior. This is particularly important in EV systems, where multiple factors such as temperature, charging rate, and battery chemistry interact in complex ways. Deep learning algorithms can model battery degradation over time, detect faults at an early stage, and optimize thermal management to prevent overheating. Moreover, DL can determine optimal charging curves by dynamically adjusting current and voltage profiles for maximum efficiency and safety. For example, a deep neural network can identify subtle anomalies in voltage patterns and predict potential battery failures before they occur, thereby improving system reliability and safety. The ability of DL to handle large-scale and complex datasets makes it highly effective in enhancing the performance of EV charging systems. Reinforcement Learning (RL) introduces an adaptive and decision-making capability to the charging process by allowing the system to learn optimal actions through interaction with the environment. In this approach, an intelligent agent continuously observes the battery state, including parameters such as SoC and temperature, and takes actions by adjusting charging current and voltage. The agent

receives feedback in the form of rewards for efficient and safe operation or penalties for undesirable conditions such as overheating or energy wastage. Over time, the system learns the optimal charging strategy that maximizes efficiency while minimizing risks. RL is particularly useful for dynamic charging control, as it enables real-time adjustments based on changing conditions. It also supports energy cost optimization by scheduling charging during periods of low electricity demand and contributes to grid stability through load balancing. For example, an RL-based system can intelligently slow down charging during peak hours and accelerate it during off-peak periods, thereby reducing operational costs and improving energy utilization. This self-learning and adaptive nature eliminates the need for fixed rules and allows continuous performance optimization.



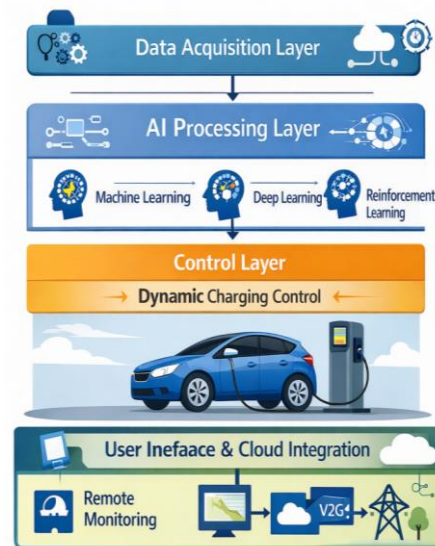
Fuzzy Logic Systems complement these AI techniques by addressing uncertainties and imprecise data in battery conditions. Unlike conventional binary logic, fuzzy logic operates using linguistic variables such as “high temperature,” “low charge,” or “moderate battery health,” enabling more flexible and human-like decision-making. In EV charging, fuzzy logic applies a set of if-then rules to determine appropriate control actions based on varying battery states. For instance, if the battery temperature is high and the state of charge is also high, the system may reduce the charging current to prevent damage, whereas if the battery level is low and the temperature is normal, it may increase the charging rate. This approach is particularly useful in handling situations where exact measurements are uncertain or fluctuating. Additionally, fuzzy logic ensures smooth and gradual control actions; for example, instead of abruptly stopping the charging process when the temperature rises slightly, it gradually reduces the charging current to maintain safety and efficiency. As a result, fuzzy logic enhances system robustness, supports battery safety management, and enables fast and reliable decision-making even under uncertain conditions. The integration of Machine Learning, Deep Learning, Reinforcement Learning, and Fuzzy Logic creates a comprehensive and intelligent EV charging system capable of predictive analysis, adaptive control, and efficient energy management. This AI-based approach significantly improves charging performance, enhances battery lifespan, ensures safety, and supports advanced functionalities such as smart grid integration and cost optimization.

Comparative Analysis of AI Techniques

Technique	Main Function	Key Advantage
Machine Learning	Prediction	Accurate forecasting
Deep Learning	Pattern recognition	Handles complex data
Reinforcement Learning	Decision-making	Adaptive optimization
Fuzzy Logic	Uncertainty handling	Flexible control

3.1 SYSTEM ARCHITECTURE

The proposed AI-based EV charging system is structured into multiple interconnected layers to ensure efficient, intelligent, and reliable operation. The Data Acquisition Layer serves as the foundation of the system by continuously collecting real-time data from the battery and its environment. This includes critical parameters such as temperature, voltage, current, State of Charge (SoC), and State of Health (SoH). These measurements provide a comprehensive understanding of the battery’s current condition and are essential for accurate analysis and decision-making. The collected data is then transmitted to the AI Processing Layer, where advanced machine learning, deep learning, and other



The Control Layer acts as the execution unit of the system by dynamically adjusting charging parameters such as current and voltage based on the insights generated by the AI models. It ensures that the charging process remains safe, efficient, and adaptive to changing conditions, including variations in battery temperature, usage patterns, and grid demand. This layer also incorporates safety mechanisms to prevent issues such as overcharging, overheating, and excessive stress on the battery. Finally, the User Interface and Cloud Integration Layer provides an interactive platform

for users and system operators. It enables real-time monitoring of charging status, battery health, and energy consumption, while also allowing remote control and management of the charging process. Cloud integration further supports data storage, advanced analytics, and continuous model improvement, making the system scalable and future-ready.

3.2 AI FEATURES

The AI-based EV charging system offers several advanced features that significantly enhance performance and user experience compared to traditional methods. One of the primary features is the implementation of adaptive charging strategies, which allow the system to adjust charging behavior dynamically based on battery condition, user requirements, and environmental factors. This adaptability ensures optimal performance under varying conditions. In addition, the system supports real-time optimization by continuously analyzing incoming data and making instant decisions to improve charging efficiency and reduce energy losses. Another critical feature is battery health prediction, which uses AI models to estimate the long-term condition of the battery and detect potential degradation or faults at an early stage, thereby extending battery lifespan and reducing maintenance costs. This system enables smart grid interaction, allowing EVs to communicate with the power grid for efficient energy management. This includes features such as load balancing, demand response, and the ability to participate in advanced concepts like vehicle-to-grid (V2G) systems. Lastly, the integration of renewable energy utilization makes the system more sustainable by enabling the use of energy sources such as solar or wind power for charging. By intelligently coordinating between grid supply, renewable sources, and battery demand, the system ensures efficient, eco-friendly, and cost-effective energy usage. Overall, these features make the proposed AI-based charging system highly efficient, intelligent, and aligned with future energy and transportation needs.



The implementation of AI-based charging systems demonstrates significant performance improvements when compared to traditional EV charging methods by introducing

intelligence, adaptability, and real-time optimization into the process. One of the most notable advantages is the reduction in charging time, as AI algorithms dynamically adjust charging current and voltage based on real-time battery conditions such as temperature, State of Charge (SoC), and internal resistance. Unlike conventional fixed charging profiles, this adaptive approach ensures that the battery is charged at the fastest possible rate without compromising safety, thereby significantly decreasing overall charging duration. In addition to faster charging, AI-based systems contribute to enhanced battery life by preventing harmful charging practices such as overcharging and deep discharging. Through continuous monitoring and predictive analysis, the system maintains the battery within optimal operating limits, reducing stress on battery cells and minimizing degradation over time. This not only extends the lifespan of the battery but also improves its long-term reliability and performance.

An AI-driven charging improves overall energy efficiency by minimizing energy losses during the charging process. By optimizing charging schedules and power delivery, the system reduces unnecessary energy consumption and avoids inefficiencies associated with traditional methods. It can also coordinate charging during off-peak hours or when renewable energy sources are available, leading to better utilization of energy resources. As a result, AI-based charging systems offer a more efficient, sustainable, and cost-effective solution, making them a superior alternative to conventional EV charging approaches.

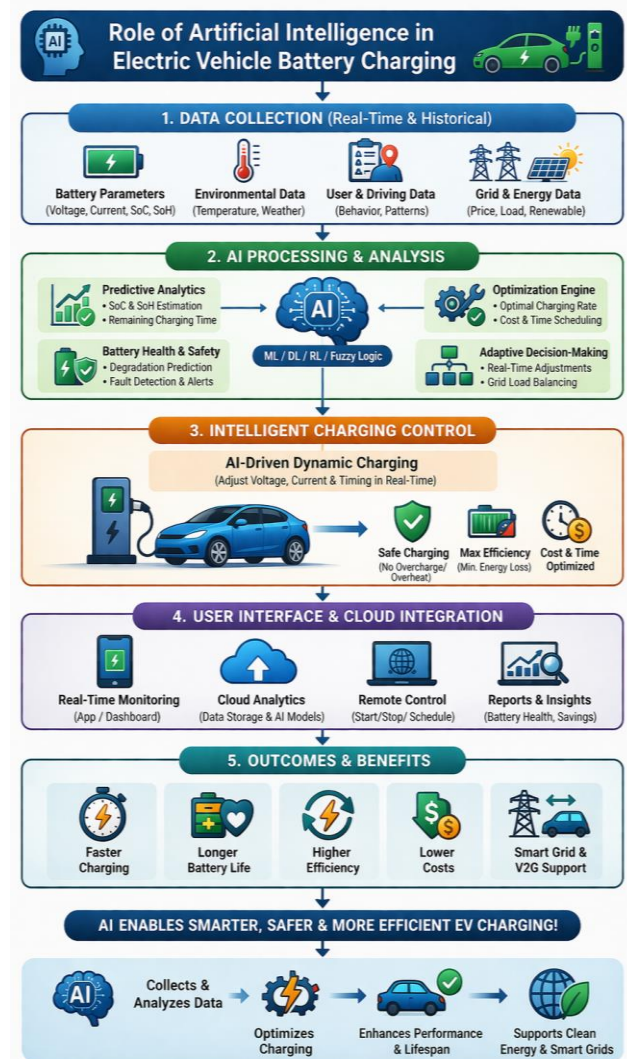
3.3. Comparative Analysis

Parameter	Traditional System	AI-Based System
Charging Time	High	Reduced
Battery Life	Moderate	Extended
Efficiency	Low	High
Adaptability	None	High
Smart Grid Integration	Limited	Advanced

4. STUDY RESULTS AND DISCUSSION

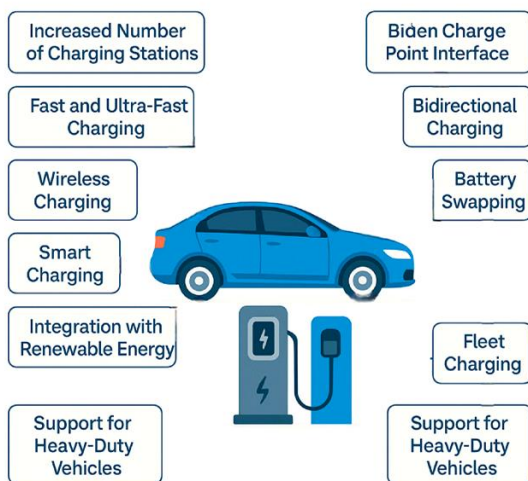
Artificial Intelligence enhances EV charging systems by enabling predictive maintenance through continuous analysis of historical and real-time battery data, allowing the system to identify patterns that indicate potential faults or degradation before they actually occur. This proactive approach helps in reducing unexpected failures, lowering maintenance costs, and improving overall system reliability. In addition, AI plays a crucial role in supporting load balancing within smart grid environments by intelligently scheduling charging activities during off-peak hours. By doing so, it reduces stress on the electrical grid, prevents overload conditions, and ensures efficient energy distribution. Furthermore, AI facilitates advanced concepts such as Vehicle-to-Grid (V2G) technology, where electric

vehicles are not just energy consumers but also act as mobile energy storage units capable of supplying power back to the grid when needed. This bidirectional energy flow improves grid stability and supports the integration of renewable energy sources. Artificial Intelligence (AI) offers numerous advantages in electric vehicle (EV) charging systems by significantly improving efficiency, reliability, and overall performance. One of the primary benefits is intelligent and adaptive charging, where AI algorithms continuously analyze real-time battery data such as temperature, voltage, and State of Charge (SoC) to dynamically adjust charging parameters. This ensures optimal charging speed while maintaining safety, thereby reducing charging time compared to conventional methods. AI enhances battery lifespan by preventing harmful conditions such as overcharging, deep discharge, and overheating through predictive monitoring and control, which minimizes battery degradation over time. The major advantage is improved energy efficiency and cost optimization. Artificial Intelligence can schedule charging during off-peak hours or when electricity prices are lower, thereby reducing energy costs for users and minimizing stress on the power grid. It also enables efficient utilization of renewable energy sources such as solar and wind by intelligently coordinating charging with energy availability. AI supports predictive maintenance by analyzing historical and real-time data to detect potential faults or failures before they occur, reducing downtime and maintenance costs. The implementation of AI-based charging systems is not without challenges. One of the primary concerns is the high computational requirement needed to process large volumes of data and run complex algorithms in real time. These advantages make AI a key enabler in the development of sustainable, efficient, and intelligent electric mobility solutions.



The data privacy and security issues arise due to the continuous collection and transmission of sensitive user and vehicle data. The initial cost of deploying AI-enabled infrastructure, including advanced sensors, communication systems, and computing resources, is also relatively high. Despite these challenges, the long-term benefits such as improved efficiency, enhanced battery life, reduced operational costs, and better energy management significantly outweigh the limitations, making AI a promising and transformative solution for the future of EV charging systems. Moreover, AI improves user convenience by enabling remote monitoring, automated scheduling, and personalized charging preferences through mobile applications and cloud platforms.

EV Infrastructure



AI also plays a crucial role in smart grid integration and load balancing. It allows EVs to communicate with the grid and adjust charging demand based on grid conditions, thereby improving grid stability and preventing overload. Advanced features such as Vehicle-to-Grid (V2G) technology enable EVs to act as distributed energy storage units, supplying power back to the grid when needed. The integration of AI in EV charging systems leads to faster charging, enhanced battery health, optimized energy usage, reduced operational costs, and better integration with modern energy infrastructures.

5. CONCLUSION

Artificial Intelligence has emerged as a powerful tool in enhancing Electric Vehicle battery charging systems. By enabling intelligent, adaptive, and predictive charging mechanisms, AI significantly improves efficiency, reduces charging time, and extends battery lifespan. Compared to traditional systems, AI-based approaches provide superior performance and better integration with modern energy infrastructures such as smart grids and renewable energy systems. These AI techniques work together to create an intelligent EV charging system. Machine Learning and Deep Learning provide predictive insights, Reinforcement Learning ensures adaptive optimization, and Fuzzy Logic enhances decision-making under uncertainty. The integration of these techniques results in faster, safer, and more efficient battery charging. The future of EV charging lies in fully autonomous, AI-driven systems that can optimize energy consumption on a global scale. Continued research and development in AI technologies will further revolutionize EV ecosystems, making them more sustainable, efficient, and user-friendly.

REFERENCES:

- [1]. "Wireless Power Transfer for Electric Vehicle Applications using Static and Dynamic with Safety", International Journal of Engineering Research (IJOER), Vol.7, Issue. 2, 2019, ISSN: 2321-7758.
- [2]. "A Novel Topology on Asymmetric Multilevel Inverter using Developed H-Bridge" in International Journal of Advanced Research

- in Electrical, Electronics and Instrumentation Engineering (IJAREEIE), Vol.7, Issue 5, 2018 pp. 2444-2454, ISSN: 2320-3765.
- [3]. "A real time Green Enviro solar Power Car" in IJERT, Volume 2, Issue 7, July 2013 ISSN: 2278-0181.
- [4]. "Enhanced Study and Review on utilization of High Quality Active Sensors in Various Field of Applications", International Journal of Multidisciplinary Research and Growth Evaluation, Vol.5, Issue. 6, pp. 1371-1379, Dec 2024..
- [5]. "Review on a real time Green Enviro Solar Systems for On-grid and Off-grid Applications with AI and IoT Technologies", International Journal of Research in Applied Science & Engineering Technology, Vol. 12, Issue. 7 July 2024. DOI: <https://doi.org/10.22214/ijraset.2024.63680>.
- [6]. "Study on enhanced real time applications of compound semiconductor (SiC and GaN) power devices with AI and IoT Technologies", International Journal of Science and Research Archive, Vol. 12, Issue.02, pp. 947-964, July 2024. DOI:<https://doi.org/10.30574/ijrsra.2024.12.2.1309>.
- [7]. "Comparative Overview of Compressed Natural Gas Vehicle (CNGV) and Electric Vehicle (EV)", International Journal of Innovative Research in Electrical, Electronics, Instrumentation and Control Engineering, Vol. 12, Issue.7, July 2024. DOI: 10.17148/IJIREEICE.2024.12715.