

SMART CROP YIELD PREDICTION AND OPTIMIZATION

Suganya S

Department of Computer Science and
Engineering,

Jayaraj Annapackiam CSI College of
Engineering, Thoothukudi, Tamil
Nadu, India

sugudevselvi@gmail.com

Kowsika V

Department of Computer Science and
Engineering,

Jayaraj Annapackiam CSI College of
Engineering, Thoothukudi, Tamil
Nadu, India

kowsika8000@gmail.com

Shunmuga Priya R

Department of Computer Science and
Engineering,

Jayaraj Annapackiam CSI College of
Engineering, Thoothukudi, Tamil
Nadu, India

shunmugapriyamesh48@gmail.com

Abstract- Agriculture plays a crucial role in food production and economic development. Predicting crop yield accurately is essential for farmers to improve productivity and manage resources effectively. This paper proposes a smart crop yield prediction and optimization system using machine learning techniques. The system analyzes agricultural data such as soil type, rainfall, temperature, humidity, and fertilizer usage to predict crop yield. Based on the prediction results, the system also provides recommendations for optimizing crop production. The proposed system helps farmers make better decisions related to crop selection, irrigation, and fertilizer usage. The implementation of such smart agricultural systems can improve productivity, reduce risks, and promote sustainable farming practices.

Index Terms - Crop Yield Prediction, Smart Agriculture, Machine Learning, Data Analytics, Agricultural Optimization.

I. INTRODUCTION

Agriculture is one of the most important sectors supporting food production and economic growth in many developing countries. Accurate crop yield prediction helps farmers make better decisions regarding crop selection, irrigation, and resource management. However, farmers often face challenges due to unpredictable weather conditions, soil variations, and improper use of fertilizers and other resources. Traditional agricultural practices rely mainly on past experience and manual estimation methods, which may not always provide reliable predictions because they cannot effectively analyze large amounts of agricultural and environmental data. As a result, farmers may experience reduced productivity and economic losses. Recent advancements in data analytics and machine learning have created new opportunities for improving agricultural decision-making. Smart systems can analyze parameters such as soil type, rainfall, temperature, humidity, and crop characteristics to predict crop yield more accurately and provide recommendations to optimize crop production. The Smart Crop Yield Prediction and Optimization system is designed to assist farmers by providing a data-driven platform for agricultural analysis. The system allows users to enter crop and environmental data, generate yield predictions using machine learning models, and store results in a database for future analysis and agricultural planning. The main contributions of this work include:

- Development of a smart crop yield prediction system using machine learning
- Integration of a user-friendly web interface for agricultural data input
- Automated crop yield prediction and optimization recommendations
- Storage of agricultural data and prediction results for future analysis

The remainder of this paper is organized as follows. Section II presents the literature review, Section III describes the system methodology, Section IV discusses the results and performance evaluation, and Section V concludes the paper and outlines future work.

II. LITERATURE REVIEW

Artificial intelligence has become an important technology in modern agriculture. Several research studies have explored the use of machine learning techniques for analyzing agricultural data and supporting farmers in crop management and yield prediction. Many studies focus on the use of machine learning algorithms to analyze environmental factors such as rainfall, temperature, soil nutrients, and humidity. Algorithms such as Decision Trees, Random Forest, and Neural Networks are widely used to predict crop yield based on historical agricultural data. These techniques help farmers understand crop performance and make better farming decisions. Researchers have also developed smart agriculture systems that integrate data analysis with decision-support mechanisms. These systems analyze crop data, soil conditions, and climate patterns to provide recommendations related to crop selection, irrigation planning, and fertilizer usage. Such systems help improve agricultural productivity and resource management. Cloud-based agricultural platforms have also been introduced to manage farming data efficiently. Cloud technology allows agricultural data to be stored and accessed remotely, enabling farmers and researchers to analyze large datasets and monitor crop performance effectively. This improves collaboration between agricultural experts and farmers. Despite these advancements, many existing systems still face challenges such as limited data availability, lack of real-time environmental monitoring, and insufficient prediction accuracy. Some systems are also complex and difficult for

farmers to use, especially in rural areas with limited technological resources.

The proposed Smart Crop Yield Prediction and Optimization system addresses these challenges by providing a simplified platform that integrates machine learning with a user-friendly web interface. The system analyzes agricultural and environmental data to predict crop yield and provide optimization recommendations, helping farmers improve productivity and make better agricultural decisions.

III. SYSTEM METHODOLOGY

The Smart Crop Yield Prediction and Optimization System is designed using a client-server architecture, where the frontend provides a user-friendly interface for farmers and the server manages data processing, machine learning analysis, and secure storage. The system enables fast crop yield prediction and optimization suggestions to support timely agricultural decision-making.

A. System Architecture

The system follows a modular architecture in which individual components perform specific functions while communicating through secure APIs. The main components include the web interface, backend processing server, machine learning engine, database storage system, and recommendation module. Farmers can input crop and environmental data through the interface, which is validated and processed by the backend server. The machine learning engine predicts crop yield and generates optimization suggestions, while results are securely stored in the centralized database and displayed in structured report format.

B. Crop Data Input Module

This module collects essential agricultural parameters such as crop type, soil properties, environmental conditions, fertilizer usage, irrigation details, and historical yield records. The system validates the entered data to ensure accuracy before sending it to the analysis module for prediction.

C. Machine Learning Analysis Module

The analysis module processes crop, soil, and climate data to identify productivity patterns and predict crop yield. It also provides optimization suggestions related to irrigation, fertilization, and crop selection, enabling farmers to plan cultivation strategies effectively.

D. Database Storage Module

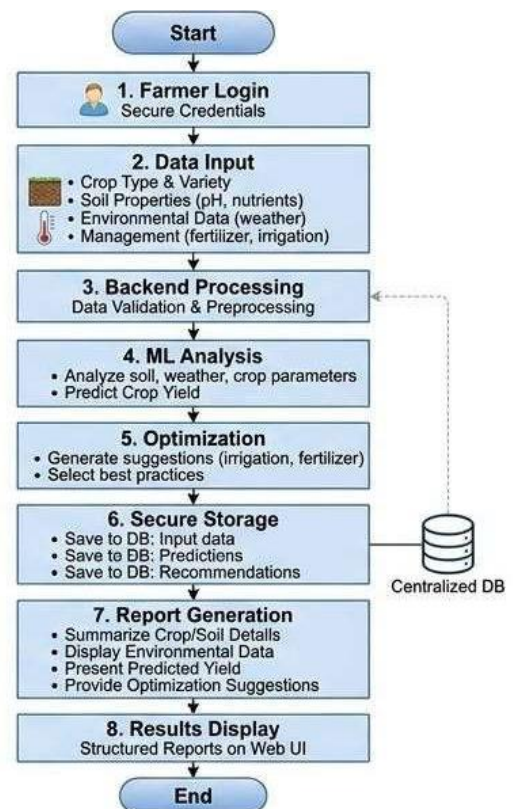
The database module securely stores crop inputs, environmental parameters, prediction results, and recommendations. It supports easy retrieval of historical records for trend analysis and enhances system reliability through efficient data management.

E. Recommendation and Report Generation Module

This module generates structured reports summarizing crop details, environmental conditions, predicted yield, and optimization suggestions. Reports are displayed through the web interface and stored for future reference to support agricultural planning.

F. System Workflow

The system workflow involves secure user login, data entry through the interface, backend validation, machine learning-based yield prediction, generation of optimization recommendations, storage of results in the database, and presentation of structured reports to farmers. This process ensures quick and data-driven insights for improved resource management and crop productivity.



IV. RESULTS AND DISCUSSION

The Crop Yield Prediction and Optimization System was developed as a web-based intelligent platform to support farmers and agricultural experts in analyzing crop data and predicting yield. The evaluation focused on system efficiency, prediction accuracy, and decision-making support in agricultural planning.

A. System Implementation Results

The system was successfully implemented using a client-server architecture integrating a web interface, backend server, machine learning module, and centralized database. Users can enter crop parameters such as crop type, soil type, rainfall, season, and land area. Testing showed that the system efficiently processed inputs and generated yield predictions quickly. The modular design ensured smooth communication between system

components and displayed prediction results in a clear format for better planning.

B. Performance of the Machine Learning Prediction Module

The prediction module effectively analyzed agricultural and environmental parameters to identify productivity patterns. During testing, the model generated reliable yield predictions that provided useful insights for cultivation planning and resource allocation. Automated prediction reduced manual estimation time and improved efficiency in agricultural decision-making.

C. Data Management and Storage Efficiency

The centralized database reliably stored user inputs, prediction outputs, and historical crop records. This enabled users to retrieve past data for trend analysis and long-term planning. Efficient data management enhanced system reliability and ensured secure preservation of agricultural information.

D. User Interface and System Usability

The system featured a simple and user-friendly interface that allowed easy navigation for entering crop data, viewing prediction results, and analyzing yield information. Testing confirmed that users could interact with the platform without difficulty, making it suitable for practical agricultural applications.

E. Discussion

The results demonstrate that the proposed system effectively supports agricultural data analysis and crop yield prediction. Compared to traditional estimation methods, the automated and structured prediction approach improves efficiency and planning accuracy. While the system provides valuable decision support, it is intended to complement farmers' experience rather than replace expert judgment. Overall, intelligent crop prediction systems can significantly enhance farming productivity through faster and more accurate yield estimation.

V. CONCLUSION

This paper presented the Crop Yield Prediction and Optimization System, an intelligent web-based platform developed to assist farmers and agricultural experts in analyzing crop data and predicting agricultural productivity. The system integrates a user-friendly interface, backend processing, machine learning prediction module, and centralized database to enable efficient data processing and yield estimation. By allowing users to input parameters such as crop type, soil characteristics, rainfall, and seasonal conditions, the system generates automated yield predictions that support faster agricultural planning and decision-making. The implementation results show that the platform can effectively process agricultural information, produce useful prediction insights, and maintain structured crop records. Furthermore, the modular system architecture enables future enhancements

through the integration of advanced technologies and additional data sources. Overall, the proposed system contributes to improving farming productivity by supporting informed crop cultivation and resource management decisions.

VI. FUTURE WORK

Although the proposed Crop Yield Prediction and Optimization System provides an effective platform for agricultural data analysis and crop yield prediction, several enhancements can be considered for future development. The integration of advanced machine learning and deep learning techniques can further improve prediction accuracy by analyzing large-scale agricultural datasets, weather patterns, and soil characteristics. The development of a mobile application version of the system would increase accessibility by enabling farmers to input crop data and view prediction results through smartphones or tablets. Future improvements may also include integration with real-time weather data sources to automatically collect climate parameters such as temperature, rainfall, and humidity for more precise predictions. In addition, real-time monitoring and advisory features related to irrigation, fertilizer usage, and crop management can support better productivity and resource optimization. Strengthening data security mechanisms, including secure storage and user authentication, will further enhance system reliability. With these advancements, the system can evolve into a comprehensive smart agriculture platform that supports efficient crop planning and data-driven farming decisions.

REFERENCES

- [1] R. J. Hijmans, S. E. Cameron, J. L. Parra, P. G. Jones, and A. Jarvis, "Very High Resolution Interpolated Climate Surfaces for Global Land Areas," *International Journal of Climatology*, vol. 25, no. 15, pp. 1965–1978, 2005.
- [2] J. You, X. Li, M. Low, D. Lobell, and S. Ermon, "Deep Gaussian Process for Crop Yield Prediction Based on Remote Sensing Data," *Proceedings of the AAAI Conference on Artificial Intelligence*, 2017.
- [3] D. Khaki and L. Wang, "Crop Yield Prediction Using Deep Neural Networks," *Frontiers in Plant Science*, vol. 10, 2019.
- [4] S. Jeong, J. Kim, and H. Kim, "Machine Learning Approaches for Crop Yield Prediction Using Climate Data," *Computers and Electronics in Agriculture*, vol. 150, pp. 243–251, 2018.
- [5] A. Kamilaris and F. X. Prenafeta Boldú, "Deep Learning in Agriculture: A Survey," *Computers and Electronics in Agriculture*, vol. 147, pp. 70–90, 2018.
- [6] FAO, "The Future of Food and Agriculture: Trends and Challenges," *Food and Agriculture Organization of the United Nations*, Rome, 2017.
- [7] D. Lobell and M. Burke, "On the Use of Statistical Models to Predict Crop Yield Responses to Climate Change," *Agricultural and Forest Meteorology*, vol. 150, no. 11, pp. 1443–1452, 2010.
- [8] A. Chlingaryan, S. Sukkarieh, and Whelan, "Machine Learning Approaches for Crop Yield Prediction and Nitrogen Status Estimation in Precision Agriculture," *Computers and Electronics in Agriculture*, vol. 151, pp. 61–69, 2018.
- [9] K. G. Liakos, P. Busato, D. Moshou, S. Pearson, and D. Bochtis, "Machine Learning in Agriculture: A Review," *Sensors*, vol. 18, no. 8, 2018.