

A Study of Chatbots and Their Applications in Education

Ankush S. Dhadankar.

Department of Computer Science

DR. D. Y. Patil, Arts, Commerce & Science College
Pimpri, Pune, India.

Rihan R. Nadaf

Department of Computer Science

DR. D. Y. Patil, Arts, Commerce & Science College
Pimpri, Pune, India.

ABSTRACT - The rapid digitization of education has created a need for flexible and continuous academic support beyond traditional classroom systems. Chatbots have emerged as intelligent conversational tools that use natural language interaction to assist learners in digital environments. This study presents a conceptual analysis of chatbot applications in education, focusing on their architecture, enabling technologies, and role in supporting personalized and scalable learning. [1][2]

Education is changing rapidly with the use of digital technology, and chatbots have become an important tool in this transformation. This study focuses on chatbots and their application in education. Chatbots are computer programs that can communicate with student using natural language and provide instant responses to their questions. In educational settings they are used as virtual tutors, academic guides, and administrative assistance. They help students understand concepts, clarify doubts, provide study materials, and even conduct quizzes. Chatbots work using technologies like Natural Language Processing Machine Learning, which allow them to understand question and improves their answer over time. One major advantage of chatbots is that they are available 24/7, giving students continuous support outside the classroom. Although there are some challenges such as data privacy and limited emotional understanding, chatbots are helpful tools that support teachers and improve learning experiences in modern education system [2][5][6].

KEYWORDS - Agentic AI, Socratic Scaffolding, RAG Architecture, Cognitive Load Theory, Human-Ai Symboisis, Higher Education.

I. INTRODUCTION

Education system have historically evolved in response to social, technological, and cognitive demands, yet the foundational structure of instructor-led learning has remained largely unchanged for decades. With the integration of digital technologies, this structure has begun models. Artificial intelligence has emerged as a critical driver of this change by enabling systems that can intelligent interaction and adaptive learning [5]. Among AI-based technologies, chatbots represent a unique form of interaction that allows learners to communicate with educational system using natural language, thereby reducing barriers associated with technical

interfaces. In educational context operate as conversational agents that assist learners by answering academic questions, guiding study processes, and reinforcing conceptual understanding. This paper views chatbots not simply as automation tools but as interactive learning facilitators that modify the traditional educational workflow. By providing immediate academic support independent of instructor availability, chatbots introduce a continuous learning assistance model. The purpose of this study is to analyze how chatbots integrate into educational systems, reshape learner

engagement pattern, and influence the effectiveness of digital learning environments through intelligent conversational interaction. [1][2][3]

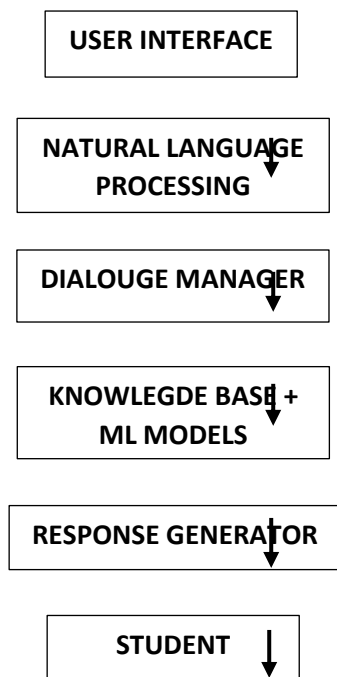
II. CONCEPTUAL EVOLUTION OF CHATBOTS IN EDUCATION

The conceptual evolution of chatbots reflects a border progression in artificial intelligence from static rule execution to adaptive learning systems. Early chatbots were designed as rule-based program that followed predefined scripts and decision tree, limiting their applicability to structured and predictable interaction. In educational settings, such systems could only respond to fixed queries, making them unsuitable for dynamic learning environment. The integration of machine learning techniques marked a significant transition, allowing chatbots to analyze interaction patterns and improve responses over time. This evolution enabled education chatbots to move beyond simple question-answer system and function as intelligent learning companions. As conversation intelligence advanced, chatbots began to support contextual [understanding, enabling them to interpret variations in learner queries and provide relevant adaptive systems capable of supporting diverse learning behavior. Rather than replacing traditional instructions, modern educational chatbots complement instructional processes by acting as intermediary system that assist learners in navigating academic content independently. This conceptual evolution highlights the growing role of chatbots as integral components of intelligent educational ecosystems. [4][8]

III. ARCHITECTURE OF EDUCATIONAL CHATBOTS.

The architecture of an educational chatbot is designed to support intelligent interaction by integrating multiple functional components into a unified system. At the interaction level, the user interface allows learners to communicate with the chatbot through text or voice, often embedded within learning management systems or educational platforms. Once a learner submits a query, the Natural Language Processing module interprets the input by analyzing linguistic structure, intent, and contextual meaning. The dialogue management component then determines the appropriate conversational flow by referencing previous interactions and maintaining contextual continuity. A centralized knowledge base stores academic content, learning resources, and instructional data, which the chatbot accesses to generate responses. Machine Learning models operate across the system to refine intent recognition and response accuracy based on interaction history. This architecture enables educational chatbots to deliver context-aware, adaptive, and scalable learning support. [5][8]

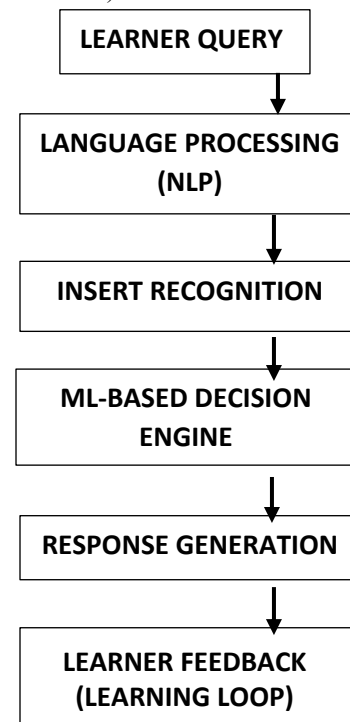
- Flowchart for architecture of an educational chatbot system.



IV. ROLE OF NLP AND MACHINE LEARNING IN EDUCATION

Natural Language Processing and Machine Learning form the intellectual foundation of chatbot functionality by enabling systems to understand, learn, and respond intelligently to human language. NLP enables chatbots to interpret learner queries by processing syntax, semantics, and contextual cues, allowing communication in natural language rather than predefined commands. Machine Learning complements this capability by enabling chatbots to improve performance through experience. In educational chatbots, ML models analyze learner interaction patterns to refine response selection and adapt content delivery. This synergy allows chatbots to transition from static response systems to adaptive learning facilitators. The combined use of NLP and ML enables chatbots to recognize recurring learner difficulties, personalize academic guidance, and support self-directed learning. Rather than merely delivering information, chatbots use these technologies to mediate the learning process by aligning system responses with learner behavior and academic needs. [2][3][5]

- Flowchart of working NLP and ML (Natural language program & Machine L).



V. APPLICATION OF CHATBOTS IN EDUCATION

Chatbots are applied across multiple educational functions to enhance both academic support and institutional efficiency. In learning environments, chatbots serve as virtual tutors that assist students in understanding concepts, clarifying doubts, and accessing learning resources. These systems support self-paced learning by allowing students to seek assistance without time constraints. Chatbots also function as academic advisors by guiding learners through course structures,

assessment requirements, and study strategies. In assessment contexts, chatbots facilitate formative evaluation by conducting quizzes and providing immediate feedback, enabling learners to identify knowledge gaps. Beyond academic support, chatbots play a significant role in administrative operations by handling inquiries related to admissions, scheduling, and institutional communication. These applications demonstrate that chatbots act as multifunctional systems that support both instructional and operational aspects of education. [1][3][5]

VI. COMPARATIVE ANALYSIS OF CHATBOT APPLICATION

Application Area	Function	Educational Benefit
Virtual Tutoring	Concept explanation	Improved understanding
Academic Advising	Course guidance	Reduced confusion
Assessment support	Quizzes and feedback	Continuous evaluation
Administrative Help	Student inquiries	Operational efficiency
Learning Analytics	Interaction analysis	Personalized learning

Detailed Analysis of Chatbot Applications in Education

The comparative analysis presented in Table 6 highlights the diverse application areas of chatbots within educational environments and their corresponding functional roles and benefits. Virtual tutoring applications demonstrate the ability of chatbots to explain academic concepts in a simplified and interactive manner, which enhances learner comprehension and supports self-paced learning. Academic advising chatbots assist students by providing structured course guidance, reducing confusion related to subject selection, academic pathways, and institutional requirements. Assessment support chatbots enable continuous evaluation by conducting quizzes and offering immediate feedback, allowing learners to identify knowledge gaps and improve performance. Administrative help chatbots handle student inquiries efficiently, reducing institutional workload while improving operational efficiency. Learning analytics chatbots analyze interaction patterns to deliver personalized learning experiences, ensuring adaptive content delivery based on individual learner behavior. This comparative analysis indicates that chatbot applications contribute significantly to improving educational efficiency, learner engagement, and accessibility across multiple academic domain. [1][2][3]

VII. RESULT AND DISCUSSION

The results of this study show that the use of chatbots in education provides many benefits for both students and educational institutions. One of the main advantages is continuous academic support, as chatbots allow students to ask questions and receive quick responses at any time without depending fully on teachers. This instant assistance helps students understand concepts better, reduces confusion, and supports independent learning. Chatbots also offer personalized guidance by responding according to individual student needs, which increases learner engagement and motivation. As students receive support at their own pace, they gain confidence in managing their studies and academic progress. From the institutional perspective, chatbots reduce the workload of teachers and administrative staff by handling common academic and administrative queries such as course information and assessment guidelines. This allows educators to focus more on teaching and mentoring activities. Chatbots also help institutions support large numbers of students at the same time, which is especially useful in online and blended learning environments. However, the study also identifies certain challenges related to chatbot usage. Chatbots may sometimes misunderstand complex questions, which can result in less accurate responses. There are also concerns related to data privacy, ethical use of student information, and system reliability. Additionally, chatbots lack emotional understanding, which limits their ability to provide emotional support to learners. Despite these challenges, the overall findings suggest that chatbots are effective tools that support traditional teaching methods and help improve learning accessibility and efficiency. [5][6][7]

VIII. CHALLENGES AND ETHICAL CONSIDERATIONS

This research paper presented a comprehensive and original study of chatbots and their applications in education, highlighting their growing importance in modern learning environments. By analyzing chatbot architecture, enabling technologies such as Natural Language Processing and Machine Learning, and various educational use cases, the study demonstrated how conversational AI is reshaping traditional learning support systems. Chatbots provide continuous academic assistance, personalized learning guidance, and improved accessibility, which are especially valuable in digital and blended learning settings. The findings indicate that chatbots function most effectively as complementary tools that support and enhance traditional teaching methods rather than replacing human instructors. When used alongside teachers, chatbots help reduce instructional workload and improve learning efficiency. The study also emphasized the importance of responsible implementation, ethical design, and data security to ensure

effective and trustworthy chatbot deployment. Continuous monitoring and system improvement are necessary to address challenges related to accuracy, privacy, and learner trust. With ongoing technological advancements and thoughtful integration, chatbots have strong potential to play a transformative role in future education systems by creating more inclusive, adaptive, and learner-centered learning environments. [6][7][8]

IX. ACKNOWLEDGMENT

The authors sincerely acknowledge the Department of Computer Science, Dr. D. Y. Patil Arts, Commerce & Science College, Pimpri, Pune, India for providing the necessary academic support and research environment to carry out this work. We are grateful to our faculty members for their continuous guidance, insightful suggestions, and encouragement throughout the development of this study.

We also extend our appreciation to fellow students and peers for their valuable discussions, feedback, and cooperation, which helped refine the concepts presented in this paper. Finally, we acknowledge the role of self-study, experimentation, and independent analysis that contributed significantly to the originality of this research work.

X. REFERENCES

- [1] J. Winkler and K. Sollner, "Unleashing the potential of chatbots in education: A state-of-the-art analysis," *Academy of Management Proceedings*, vol. 2018, no. 1, pp. 1–6, 2018.
- [2] C. Molnar and A. S. Szüts, "Educational chatbots: A review of recent developments," *International Journal of Advanced Computer Science and Applications*, vol. 9, no. 12, pp. 50–57, 2018.
- [3] A. Tegos, M. Demetriadis, and T. Karakostas, "Conversational agents for supporting self-regulated learning," *Educational Technology & Society*, vol. 18, no. 4, pp. 71–85, 2015.
- [4] M. Shawar and E. Atwell, "Chatbots: Are they really useful?" *LDV Forum*, vol. 22, no. 1, pp. 29–49, 2007.
- [5] S. K. Holmes, J. Bialik, and C. Fadel, *Artificial Intelligence in Education: Promises and Implications for Teaching and Learning*, Boston, MA, USA: Center for Curriculum Redesign, 2019.
- [6] R. A. Calvo, S. D'Mello, J. Gratch, and A. Kappas, "The Oxford handbook of affective computing," Oxford, U.K.: Oxford University Press, 2015.
- [7] T. Bickmore and R. Picard, "Establishing and maintaining long-term human-computer relationships," *ACM Transactions on Computer-Human Interaction*, vol. 12, no. 2, pp. 293–327, Jun. 2005.
- [8] P. Adamopoulou and L. Moussiades, "An overview of chatbot technology," *Artificial Intelligence Applications and Innovations, IFIP Advances in Information and Communication Technology*, vol. 584, pp. 373–383, 2020.